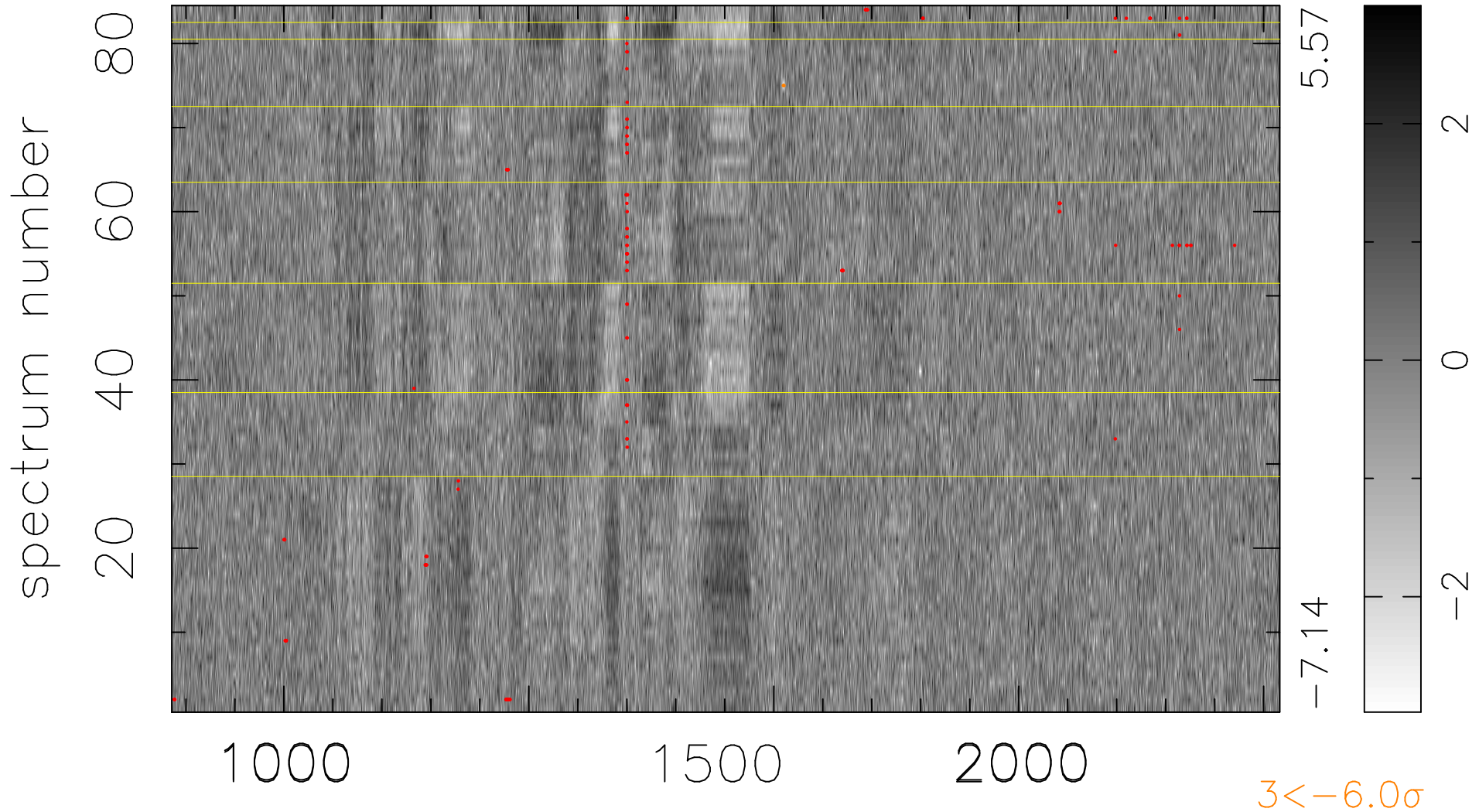


$$\chi(\lambda, t) = ( \text{Data} - \text{Model } \text{AC}_5\text{B}_6\text{F} ) / \sigma \chi$$

$$\chi^2 / (380016 - 5292) = 1.028 \Rightarrow 1.010$$

4524x84



bad:153=0.040%  $\lambda$  (Å)  $z = 3.04079$