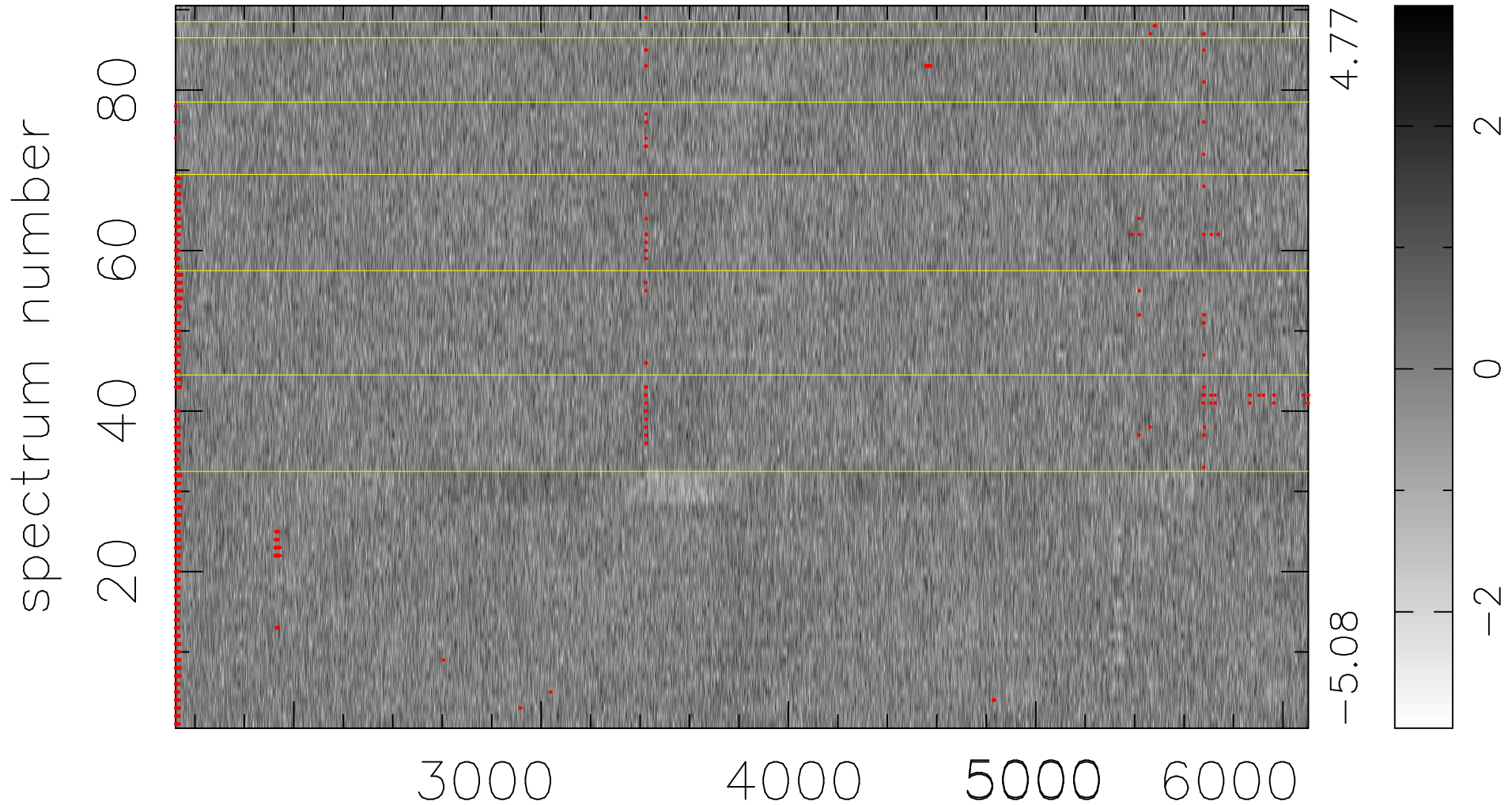


$$\chi(\lambda, t) = ( \text{Data} - \text{Model } \text{AC}_5\text{B}_3\text{F} ) / \sigma \chi$$

$$\chi^2 / (412290 - 5146) = 0.925 \Rightarrow 1.005$$

4581 × 90



bad:1292=0.31%  $\lambda$  (Å)  $z = 0.599990$