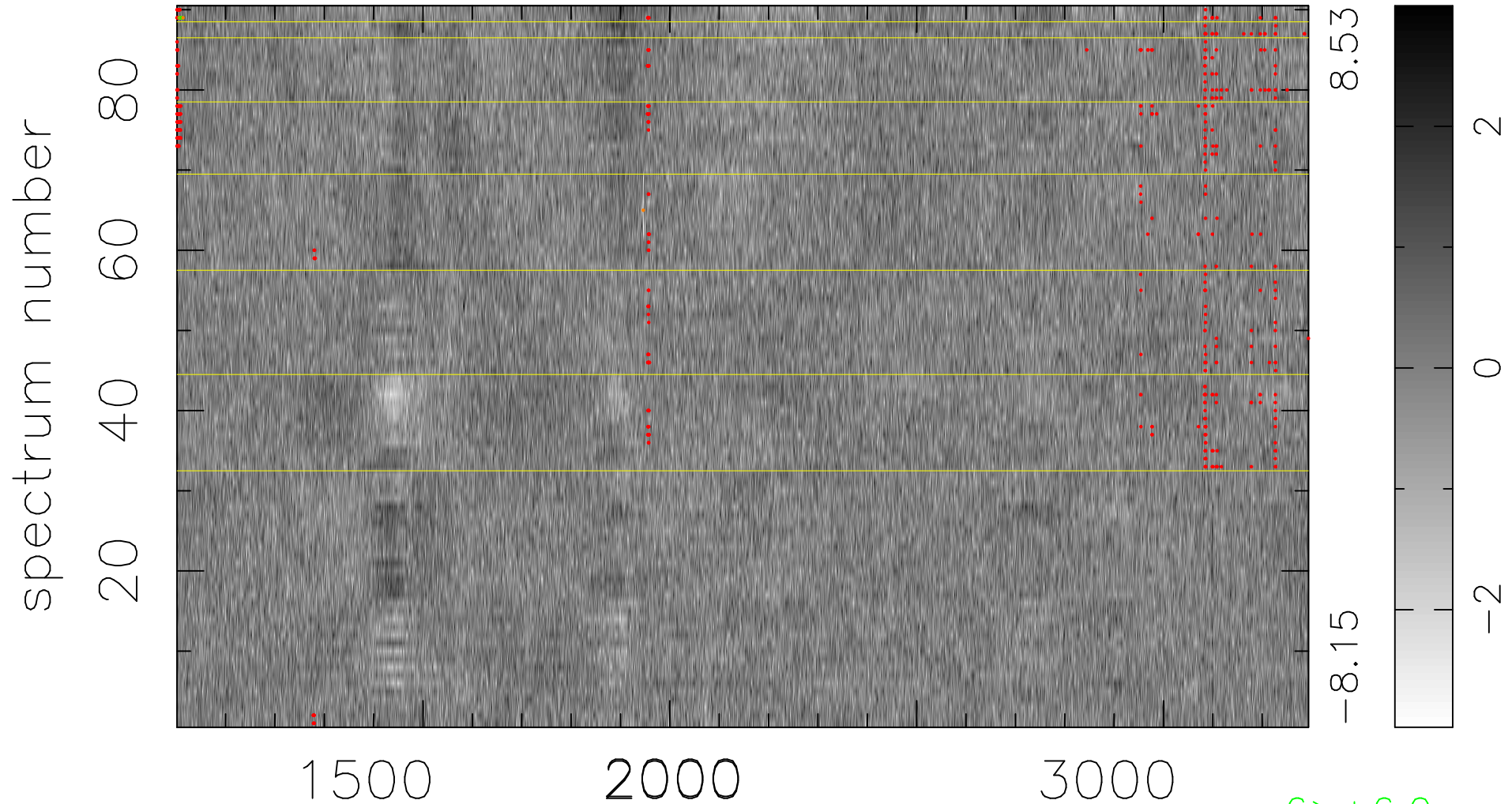


$$\chi(\lambda, t) = ( \text{Data} - \text{Model AC}_5\text{F} ) / \sigma \chi$$

$$\chi^2 / (412650 - 5157) = 0.967 \Rightarrow 1.008$$

4585x90



bad:464=0.11%

$\lambda$  (Å)  $z = 1.85213$

$6 > +6.0\sigma$

$6 < -6.0\sigma$