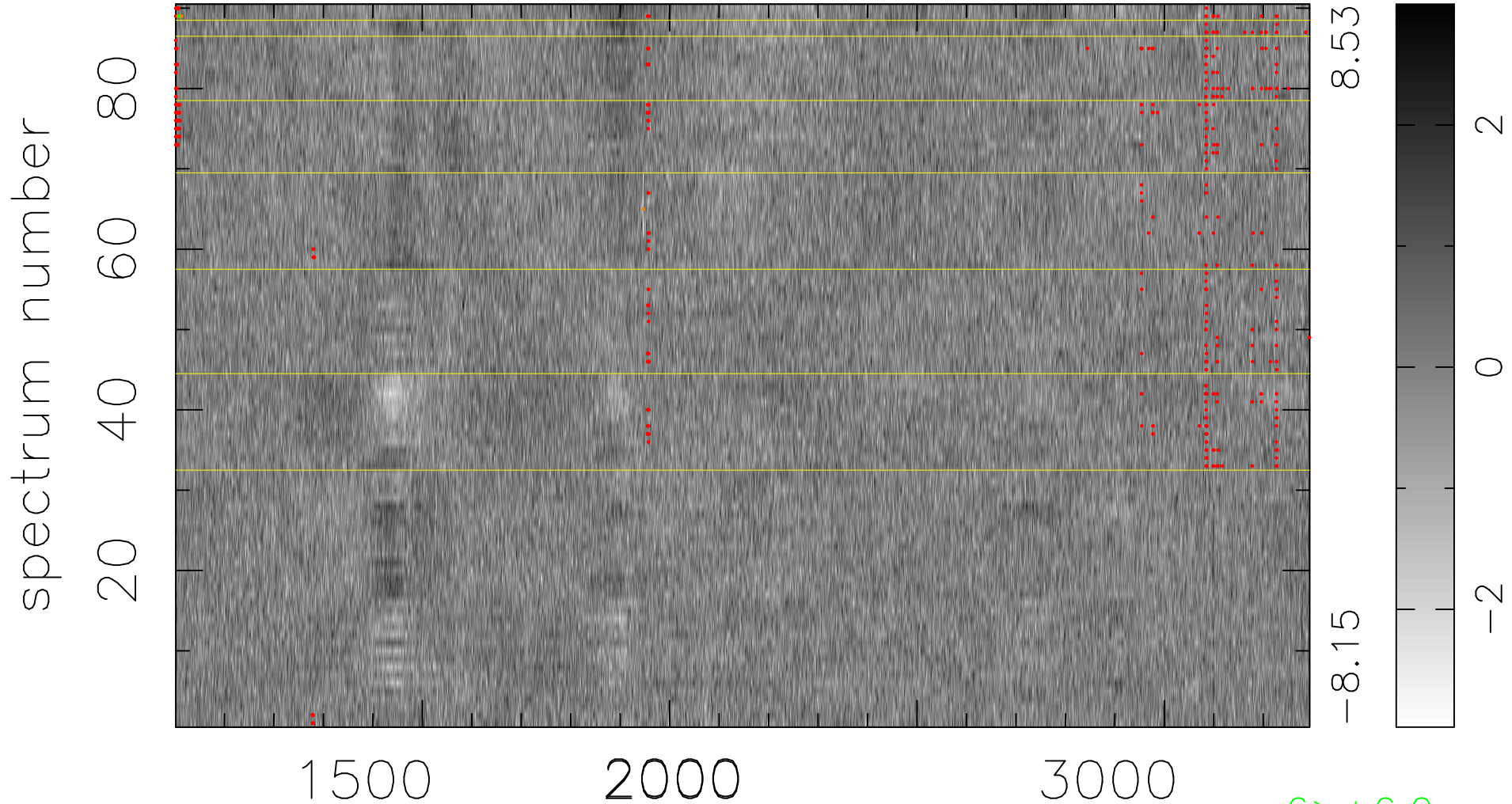


$$\chi(\lambda,t) = (\text{Data} - \text{Model } AC_5) / \sigma \chi$$

$$\chi^2 / (412650 - 5067) = 0.967 \Rightarrow 1.008$$

4585x90



bad:464=0.11%

λ (Å) $z = 1.85213$

$6 > +6.0\sigma$

$6 < -6.0\sigma$