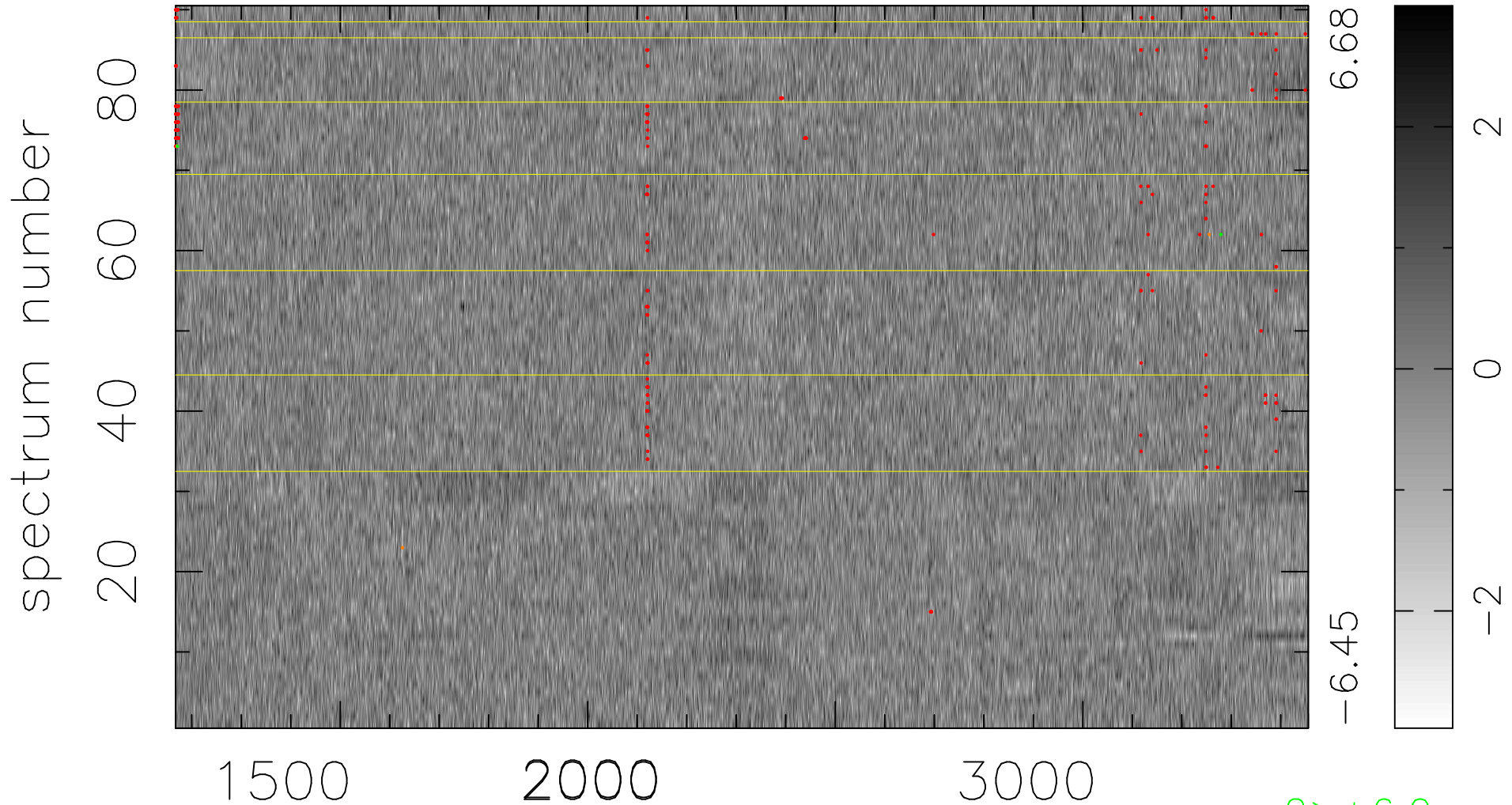


$$\chi(\lambda, t) = (\text{Data} - \text{Model } \text{AC}_5\text{B}_5\text{F}) / \sigma \chi$$

$$\chi^2 / (411930 - 5324) = 0.963 \Rightarrow 1.007$$

4577x90



bad:265=0.064% λ (Å) $z = 1.64486$

2 > +6.0 σ

3 < -6.0 σ