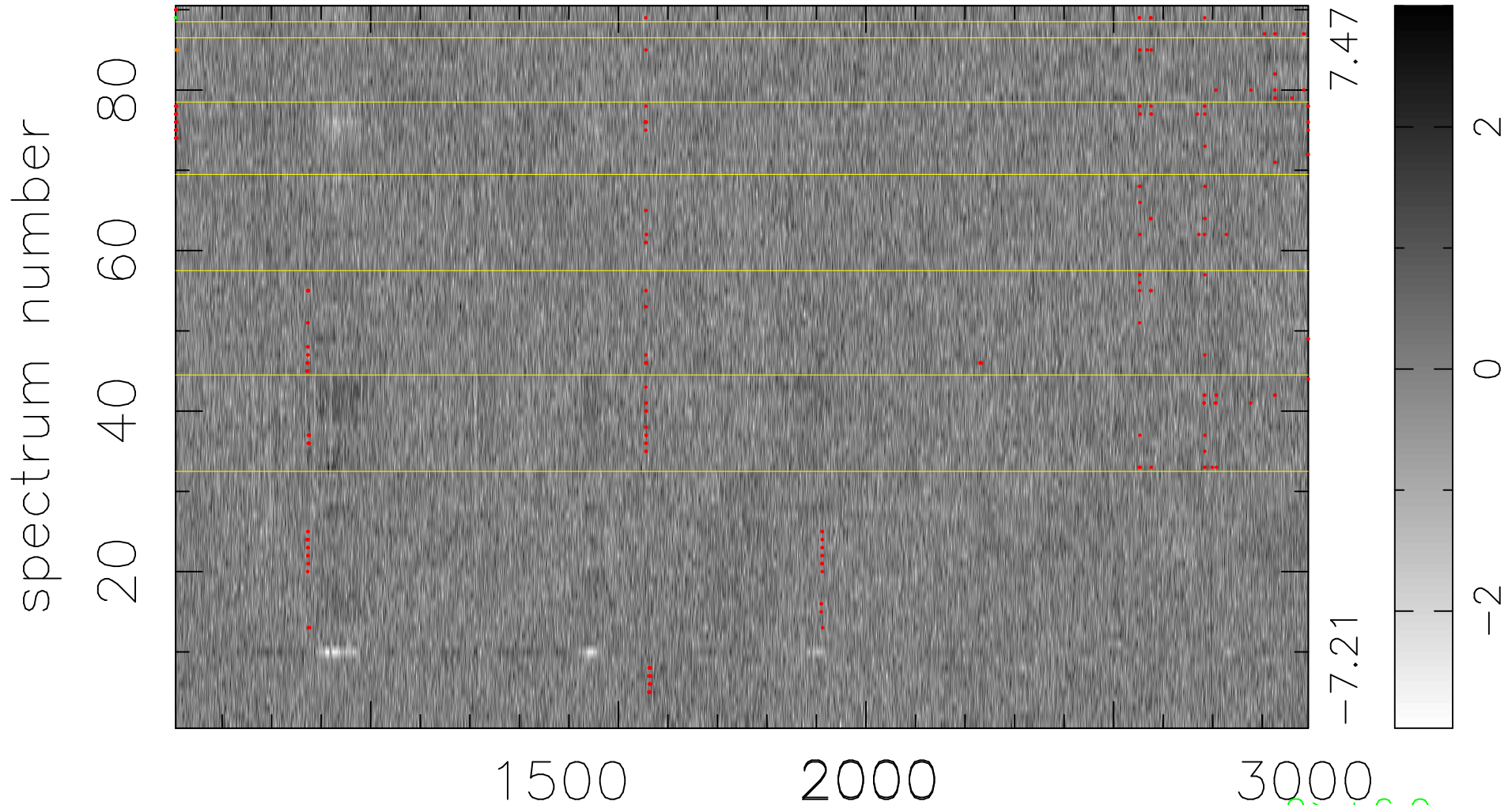


$$\chi(\lambda, t) = (\text{Data} - \text{Model AC}_5\text{F}) / \sigma \chi$$

$$\chi^2 / (411750 - 5336) = 0.924 \Rightarrow 1.007$$

4575x90



bad:256=0.062% λ (Å) $z = 2.43081$

2 > +6.0 σ

3 < -6.0 σ