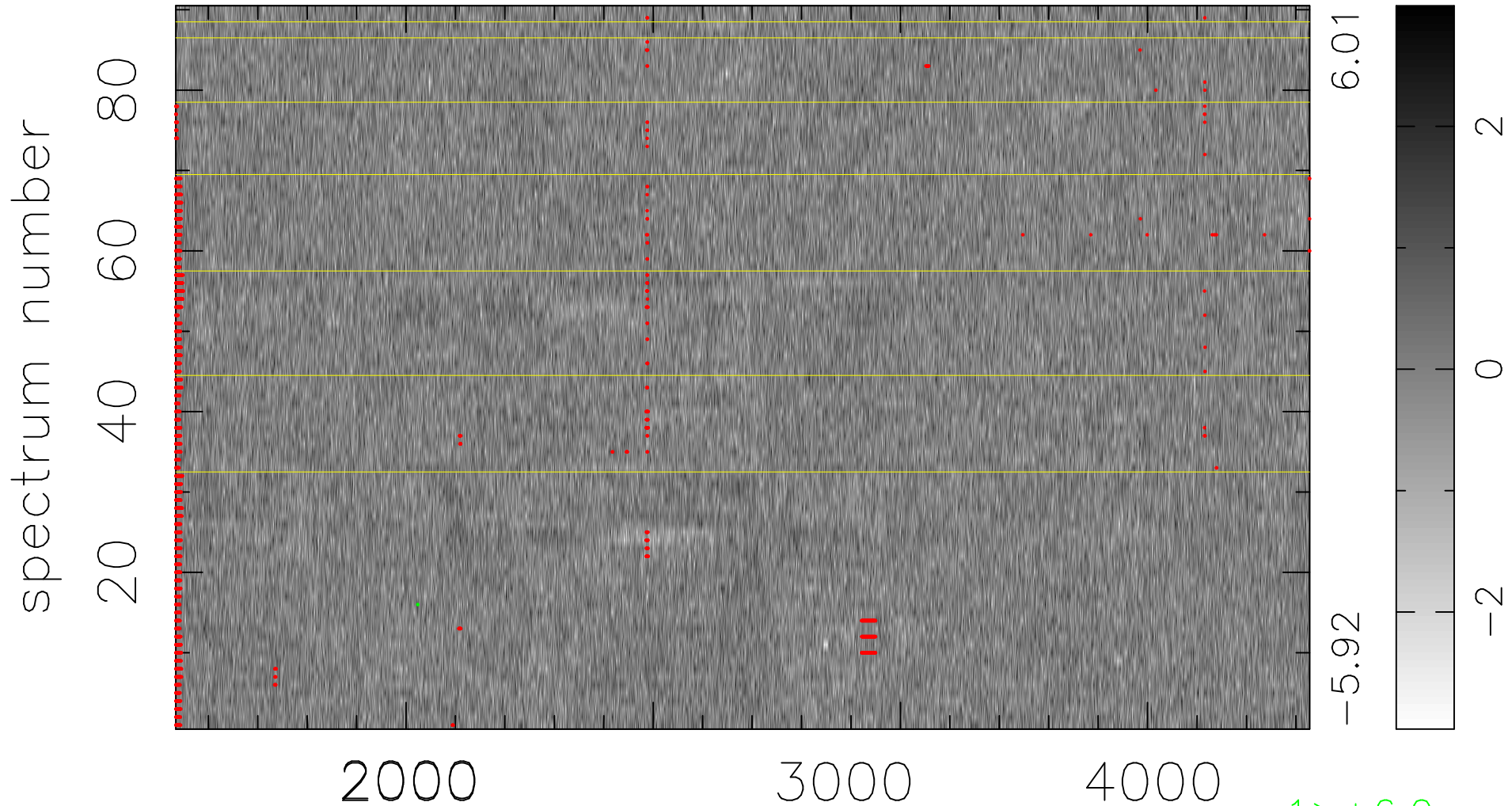


$$\chi(\lambda, t) = ( \text{Data} - \text{Model } \text{AC}_5\text{B}_3\text{F} ) / \sigma \chi$$

$$\chi^2 / (412920 - 5127) = 0.918 \Rightarrow 1.007$$

4588x90



bad:1843=0.45%  $\lambda$  (Å)  $z = 1.23329$