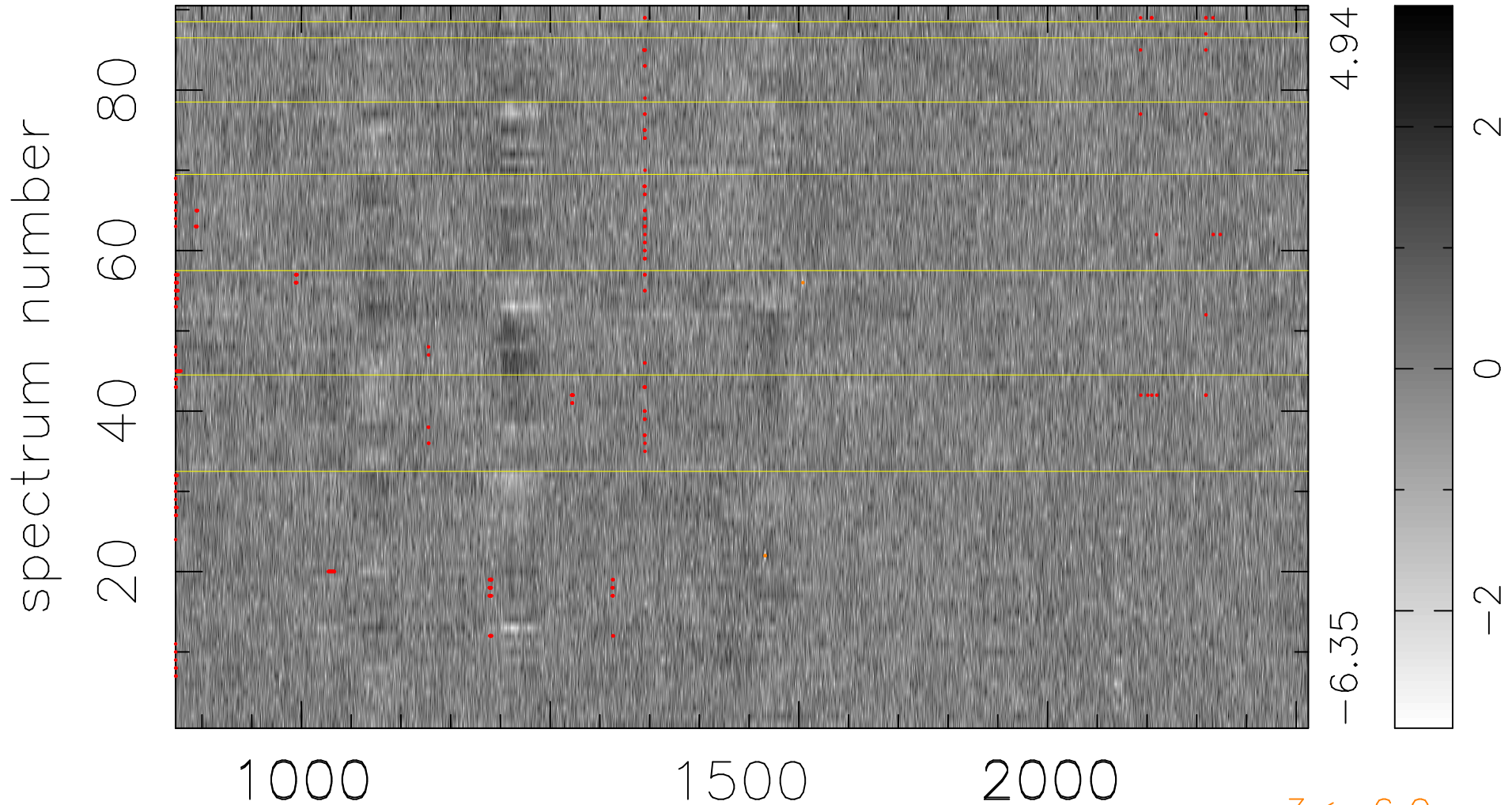


$$\chi(\lambda,t) = ( \text{Data} - \text{Model } AC_5 ) / \sigma \chi$$

$$\chi^2 / (409950 - 5125) = 0.979 \Rightarrow 1.008$$

4555x90



bad:309=0.075%  $\lambda$  (Å)  $z = 3.05970$

$3 < -6.0\sigma$