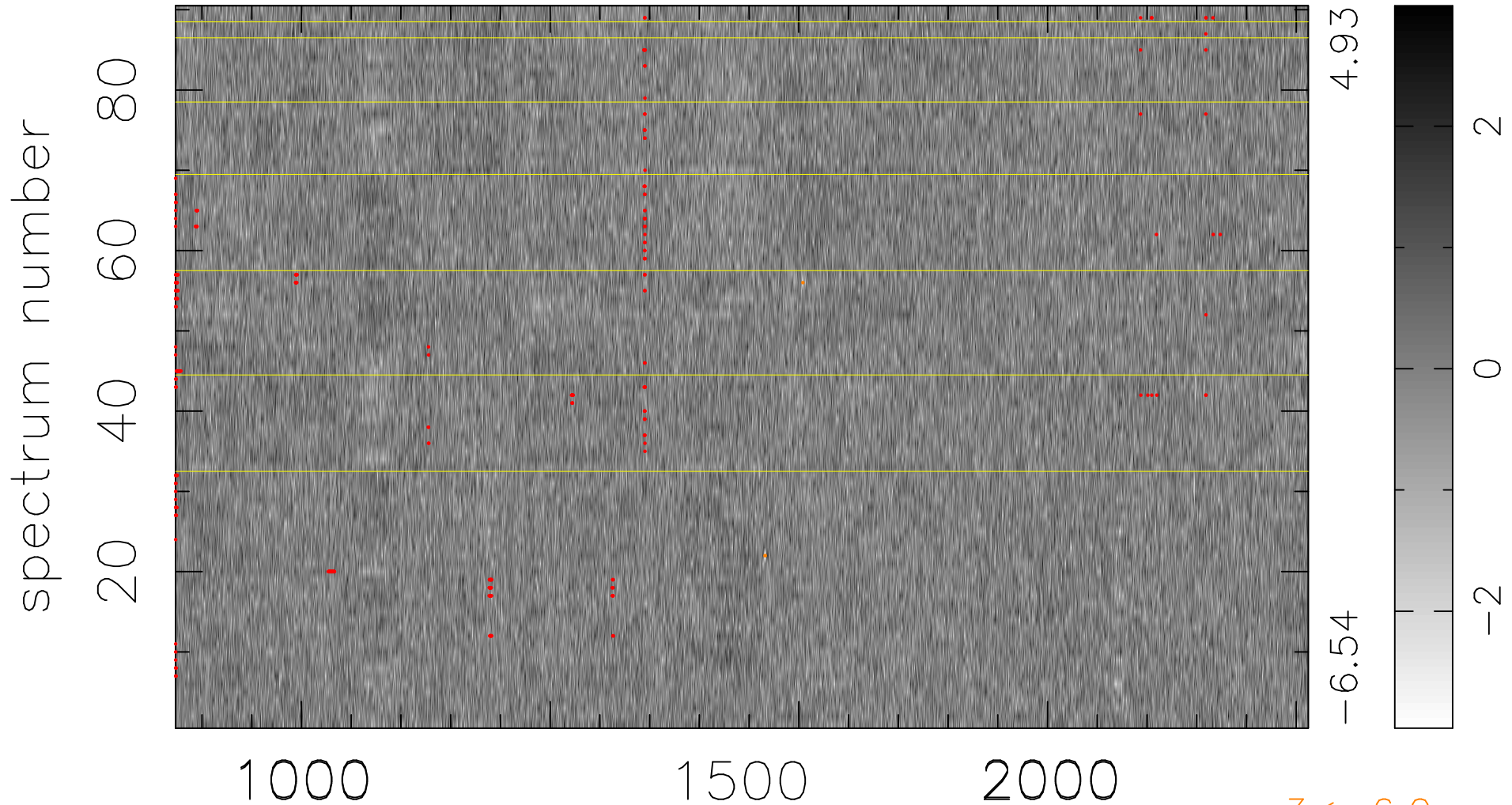


$$\chi(\lambda, t) = ( \text{Data} - \text{Model } \text{AC}_5\text{B}_6\text{F} ) / \sigma \chi$$

$$\chi^2 / (409950 - 5391) = 0.963 \Rightarrow 1.006$$

4555x90



bad:309=0.075%  $\lambda$  (Å)  $z = 3.05970$

$3 < -6.0\sigma$