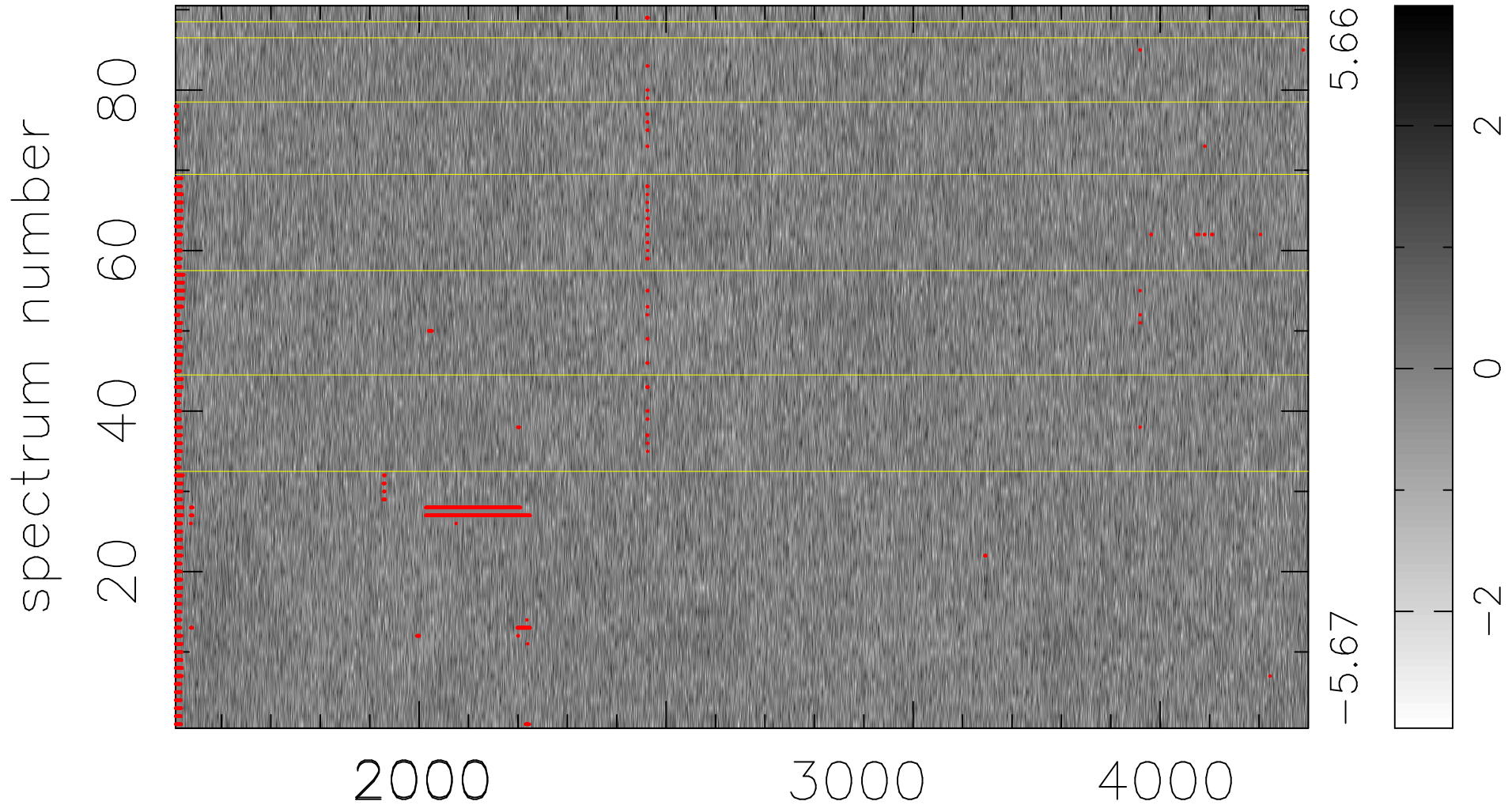


$$\chi(\lambda, t) = (\text{Data} - \text{Model } \text{AC}_5\text{B}_3\text{F}) / \sigma \chi$$

$$\chi^2 / (412740 - 5082) = 0.929 \Rightarrow 1.007$$

4586x90



bad:2739=0.66% λ (Å) $z = 1.25979$