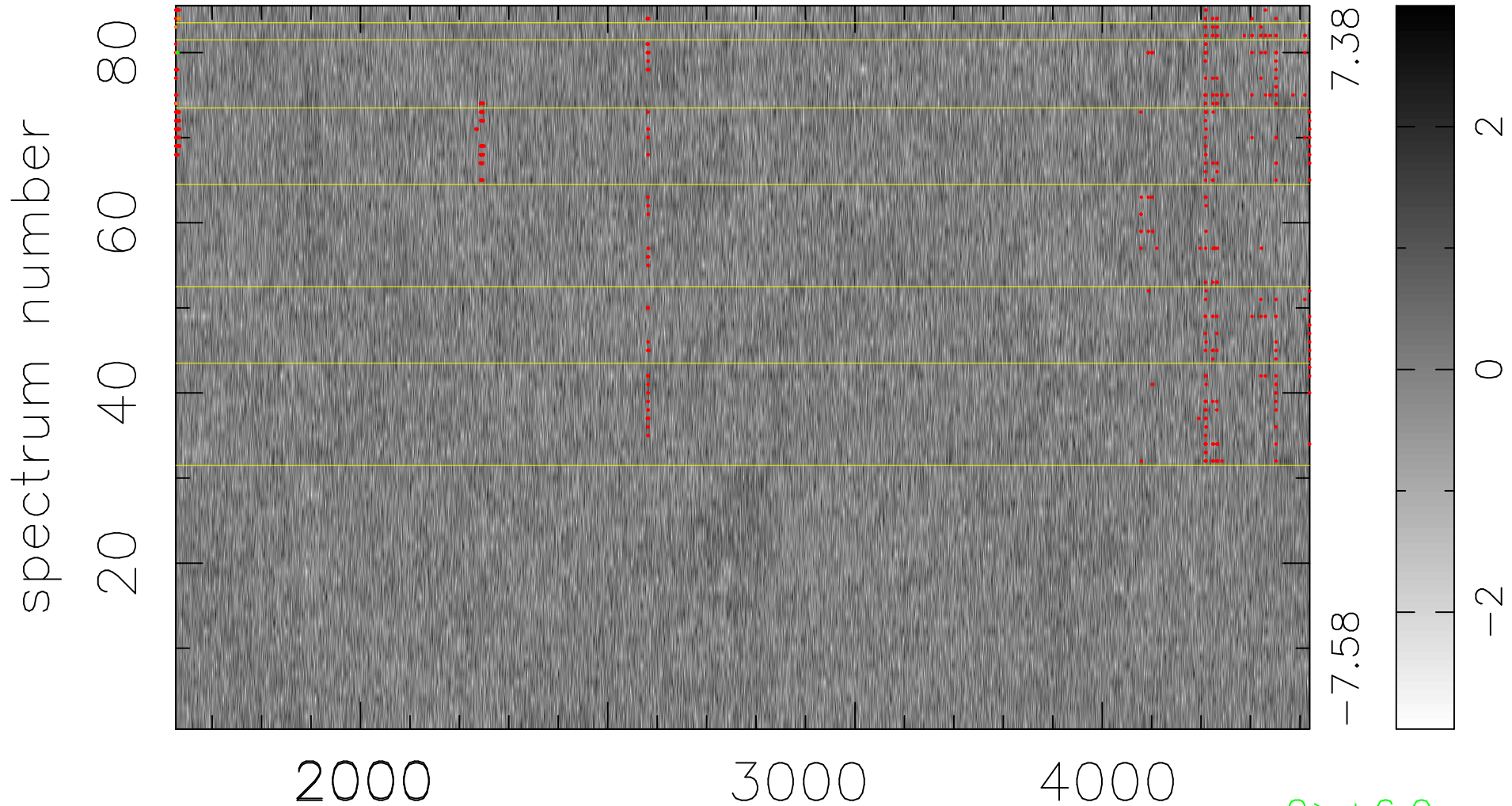


$$\chi(\lambda,t) = (\text{Data} - \text{Model } AC_5) / \sigma \chi$$

$$\chi^2 / (389895 - 4860) = 0.967 \Rightarrow 1.007$$

4587x85



bad:532=0.14%

λ (Å) $z = 1.13893$

2 > +6.0 σ

7 < -6.0 σ