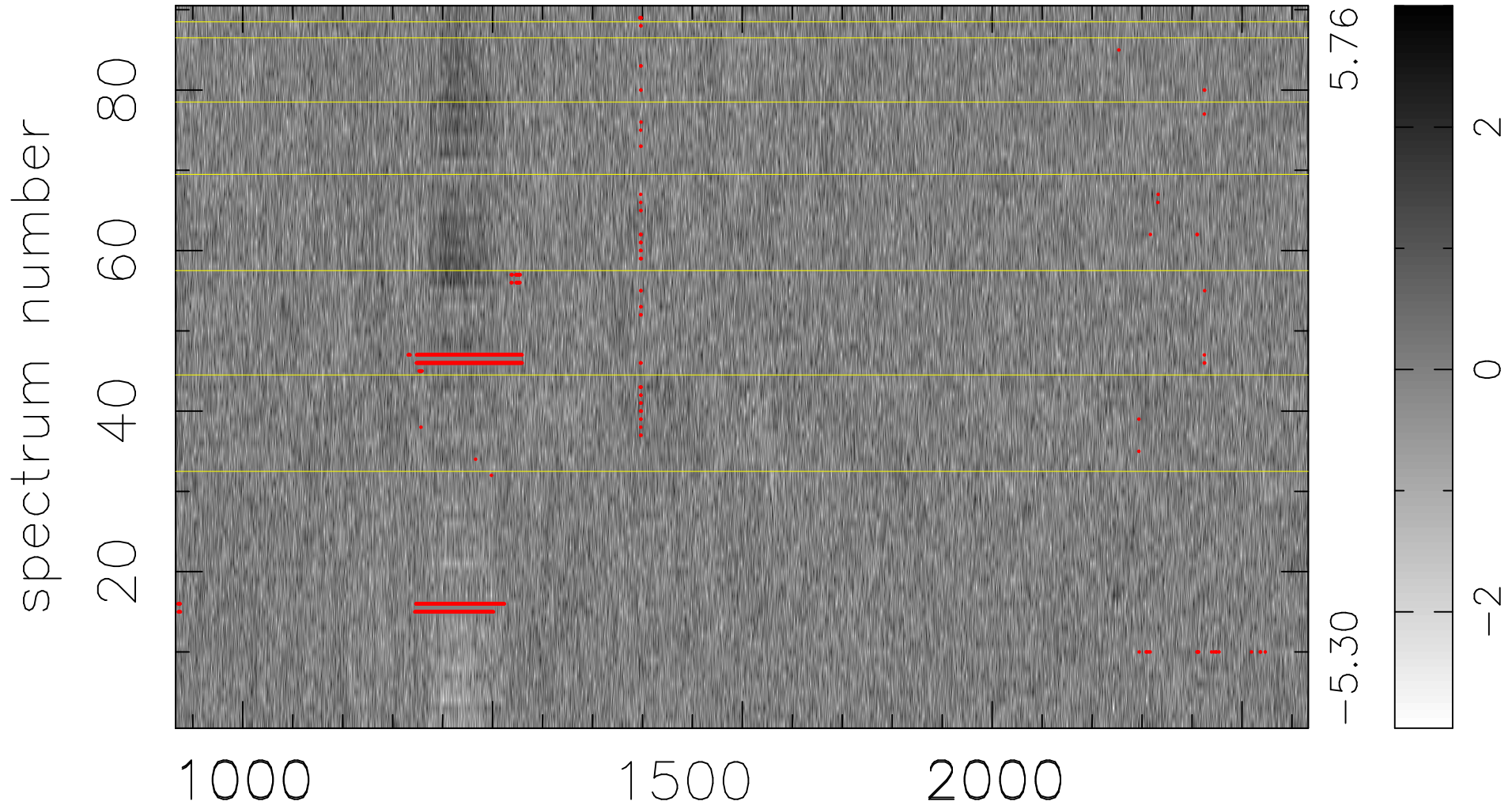


$$\chi(\lambda, t) = (\text{Data} - \text{Model } \text{AC}_5\text{B}_6\text{F}) / \sigma \chi$$

$$\chi^2 / (408150 - 5337) = 0.935 \Rightarrow 1.008$$

4535x90



bad:1691=0.41% λ (Å) $z = 2.86525$