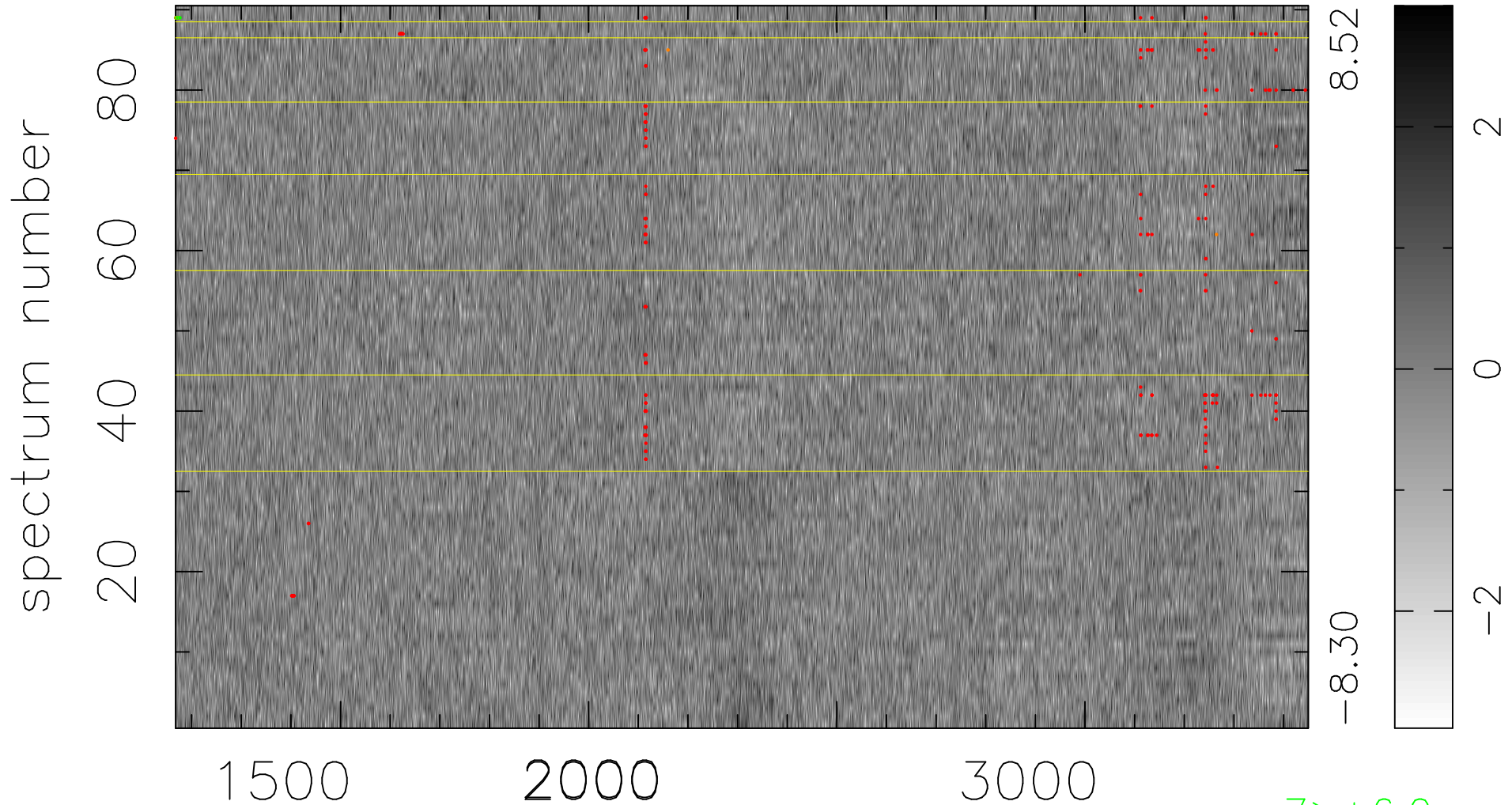


$$\chi(\lambda, t) = (\text{Data} - \text{Model } \text{AC}_5\text{B}_5\text{F}) / \sigma \chi$$

$$\chi^2 / (410850 - 5278) = 0.974 \Rightarrow 1.007$$

4565x90



bad:226=0.055% λ (Å) $z = 1.65184$

7 > +6.0 σ

7 < -6.0 σ