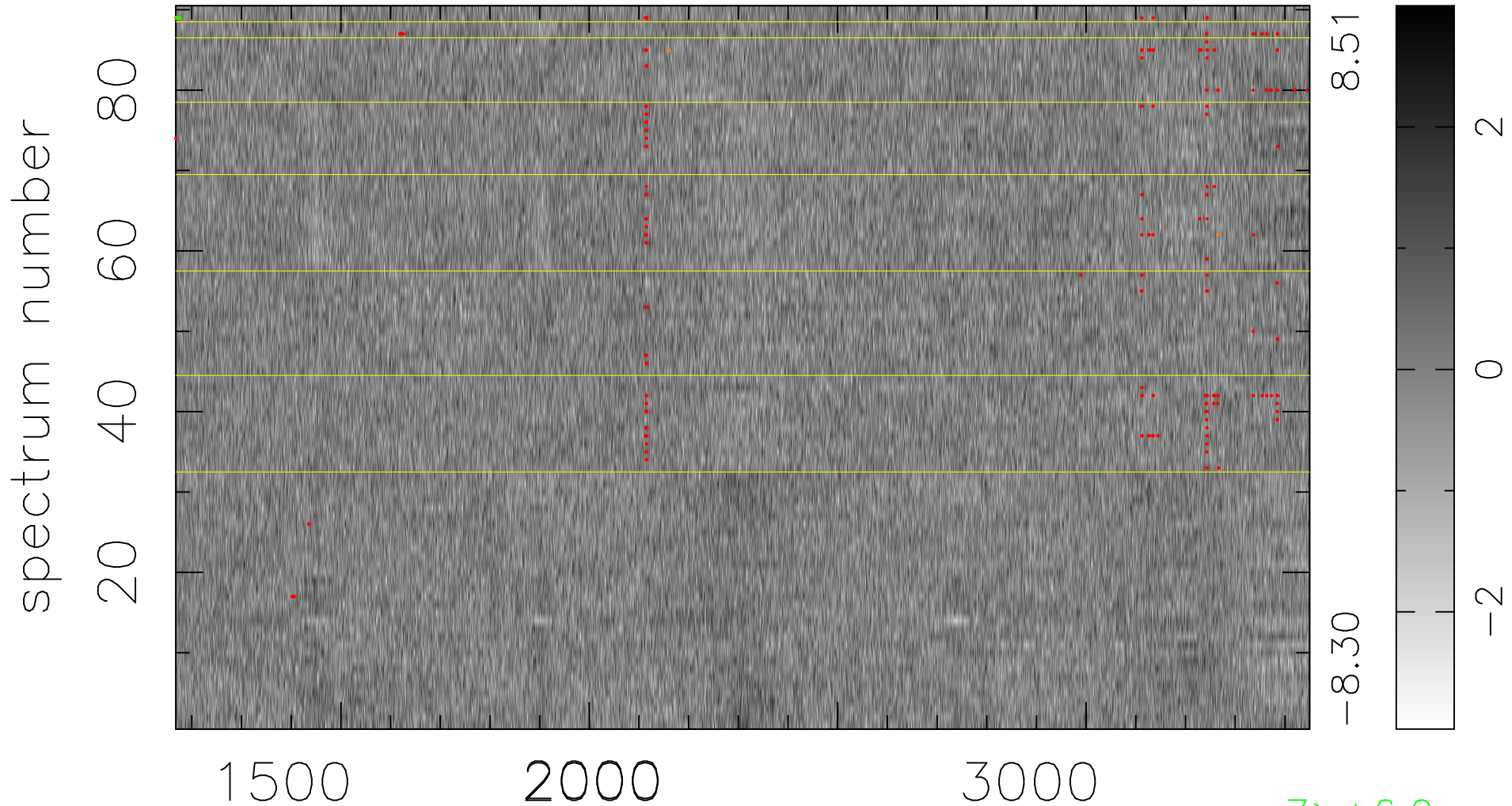


$$\chi(\lambda, t) = (\text{Data} - \text{Model } AC_5) / \sigma \chi$$

$$\chi^2 / (410850 - 5044) = 0.979 \Rightarrow 1.007$$

4565x90



bad:226=0.055% λ (Å) $z = 1.65184$

$7 > +6.0\sigma$

$7 < -6.0\sigma$