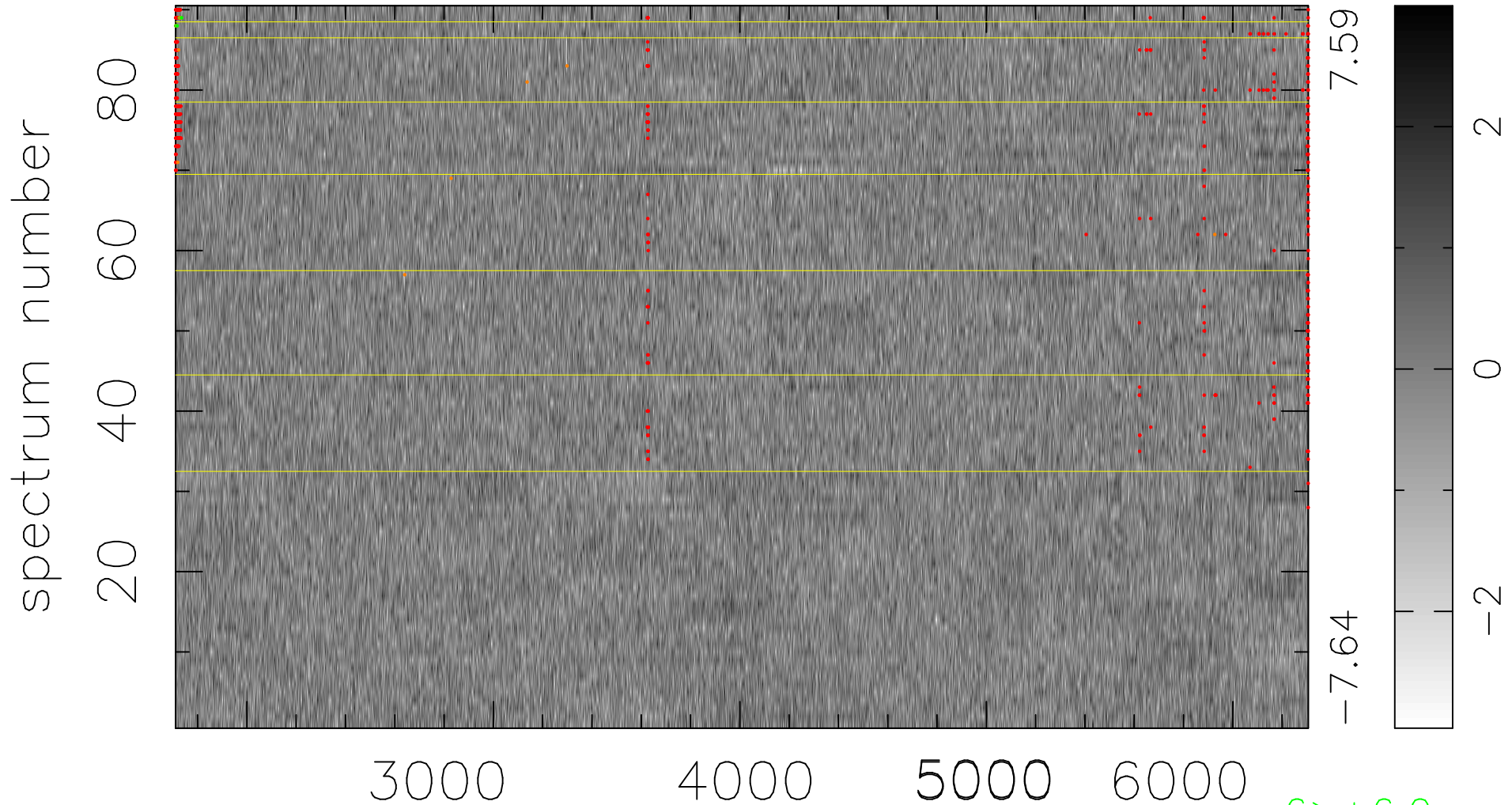


$$\chi(\lambda, t) = (\text{Data} - \text{Model } \text{AC}_5\text{B}_4\text{F}) / \sigma \chi$$

$$\chi^2 / (413640 - 5229) = 0.974 \Rightarrow 1.007$$

4596x90



7.59

-7.64

2

0

-2

6 > +6.0σ

13 < -6.0σ

bad:551=0.13%

λ (Å) z = 0.52687