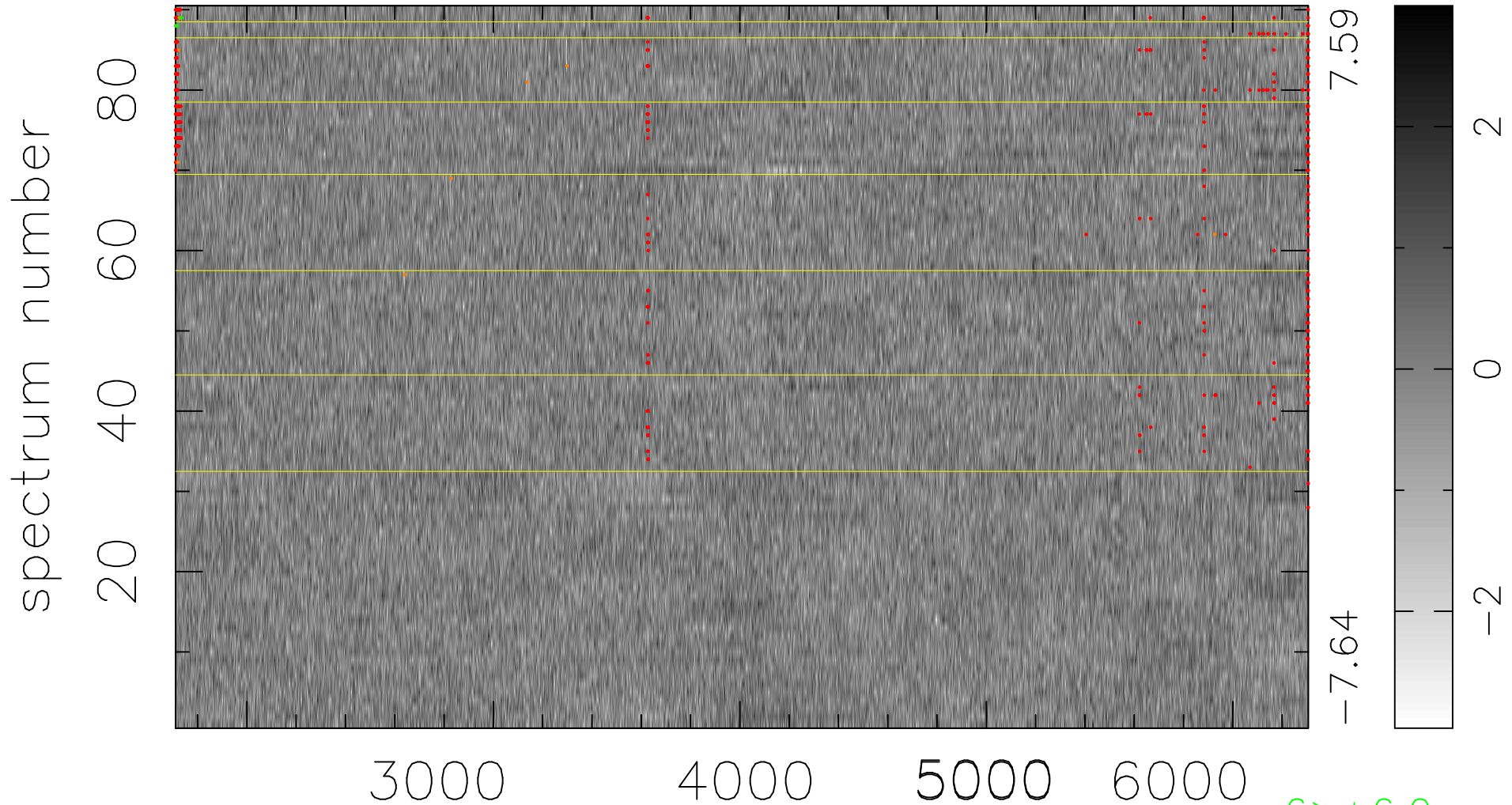


$$\chi(\lambda, t) = (\text{Data} - \text{Model AC}_5\text{F}) / \sigma \chi$$

$$\chi^2 / (413640 - 5075) = 0.976 \Rightarrow 1.007$$

4596x90



bad:551=0.13%

λ (Å) $z = 0.52687$

6 > +6.0σ
13 < -6.0σ