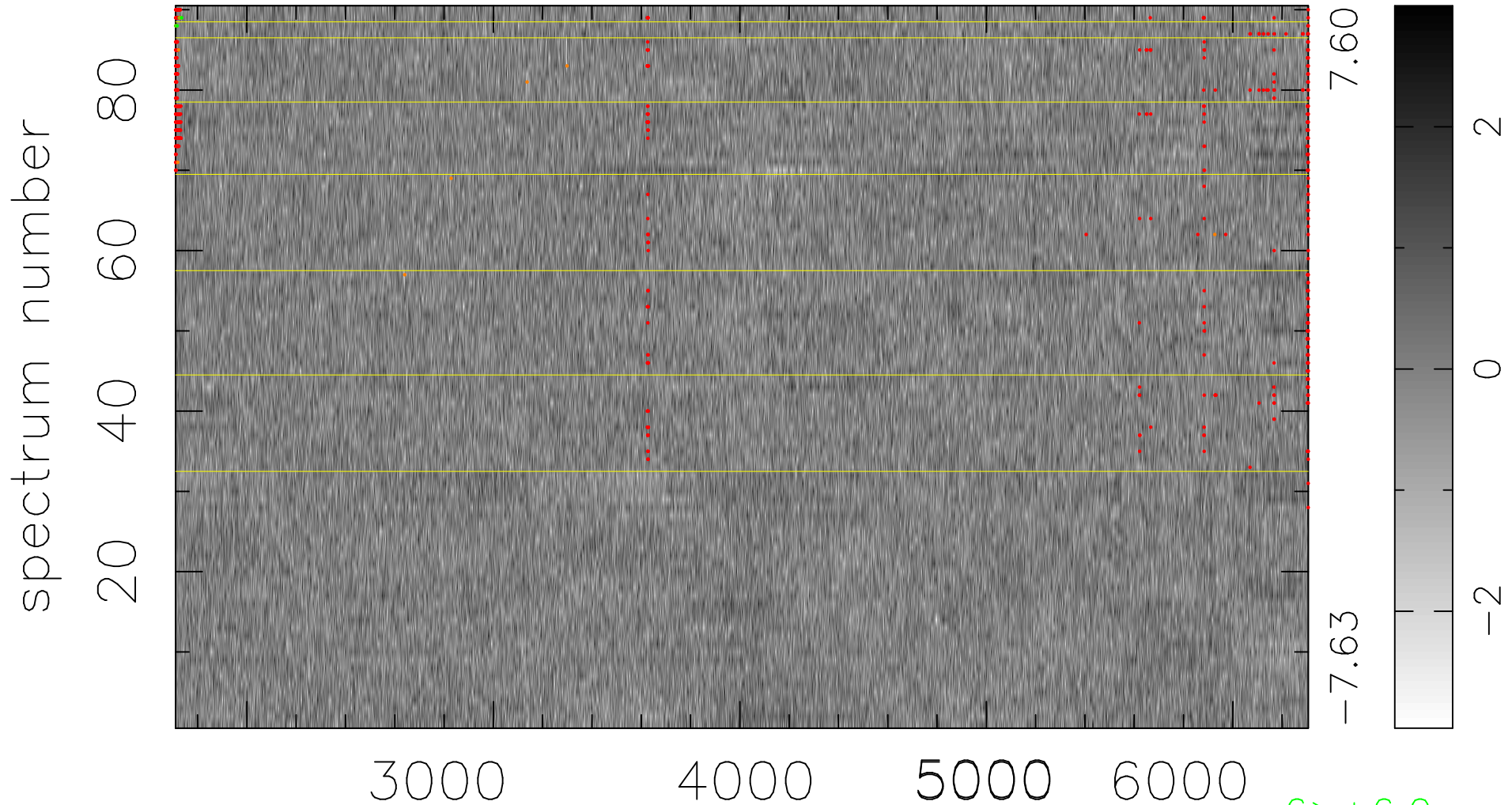


$$\chi(\lambda, t) = (\text{Data} - \text{Model } AC_5) / \sigma \chi$$

$$\chi^2 / (413640 - 4985) = 0.977 \Rightarrow 1.007$$

4596x90



7.60
-7.63

2
0
-2

6 > +6.0σ
13 < -6.0σ

bad:551=0.13% λ (Å) z = 0.52687