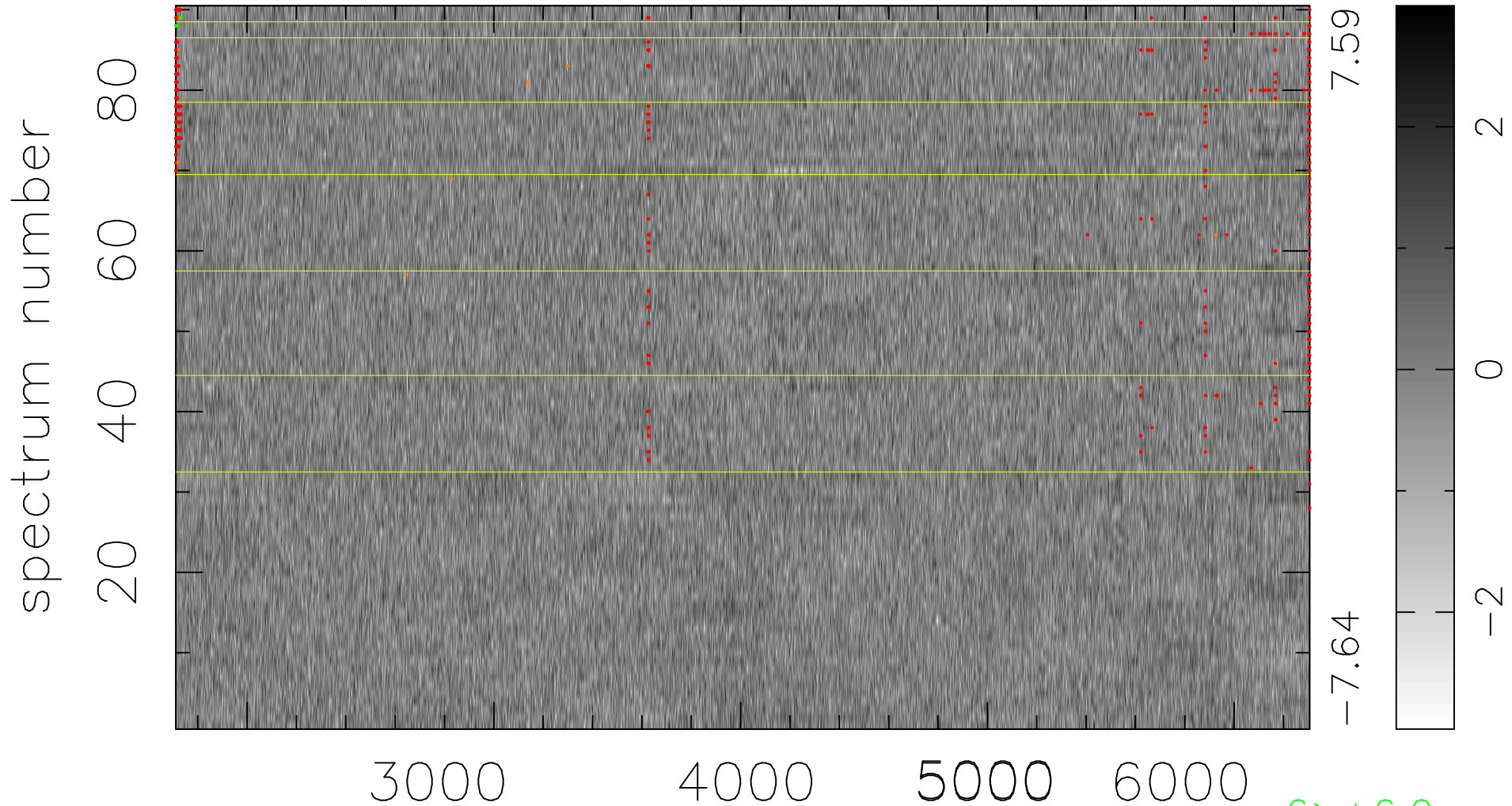


$$\chi(\lambda, t) = ( \text{Data} - \text{Model } \text{AC}_5\text{B}_4\text{F} ) / \sigma \chi$$

$$\chi^2 / (413640 - 5229) = 0.974 \Rightarrow 1.007$$

4596x90



bad:551=0.13%

$\lambda$  (Å)  $z = 0.52687$

6 > +6.0σ  
13 < -6.0σ