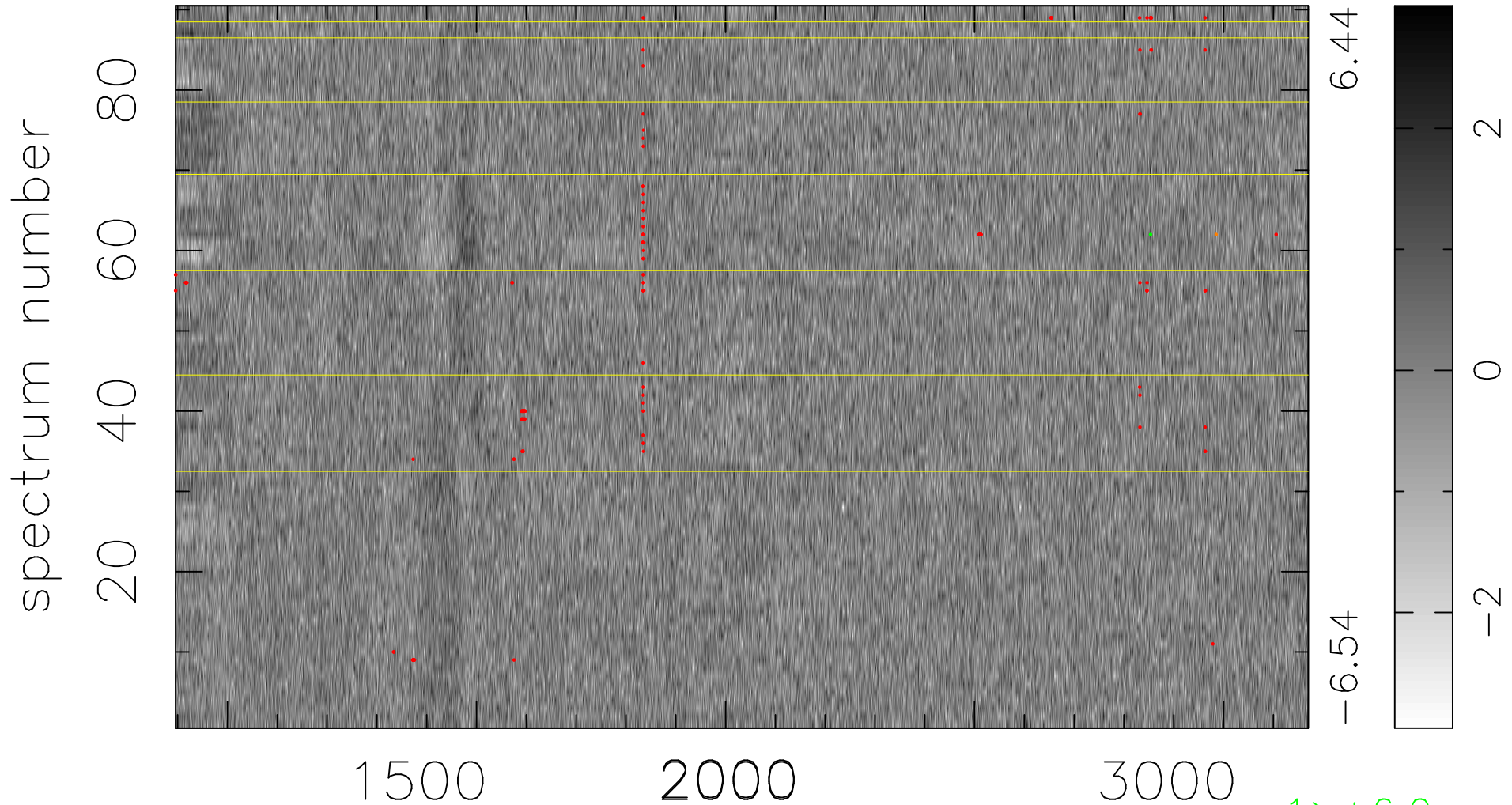


$$\chi(\lambda, t) = ( \text{Data} - \text{Model } \text{AC}_5\text{B}_7\text{F} ) / \sigma \chi$$

$$\chi^2 / (409410 - 5455) = 0.924 \Rightarrow 1.008$$

4549 × 90



6.44

-6.54

2

0

-2

1 > +6.0σ

1 < -6.0σ

bad:151=0.037% λ (Å) z = 2.01661