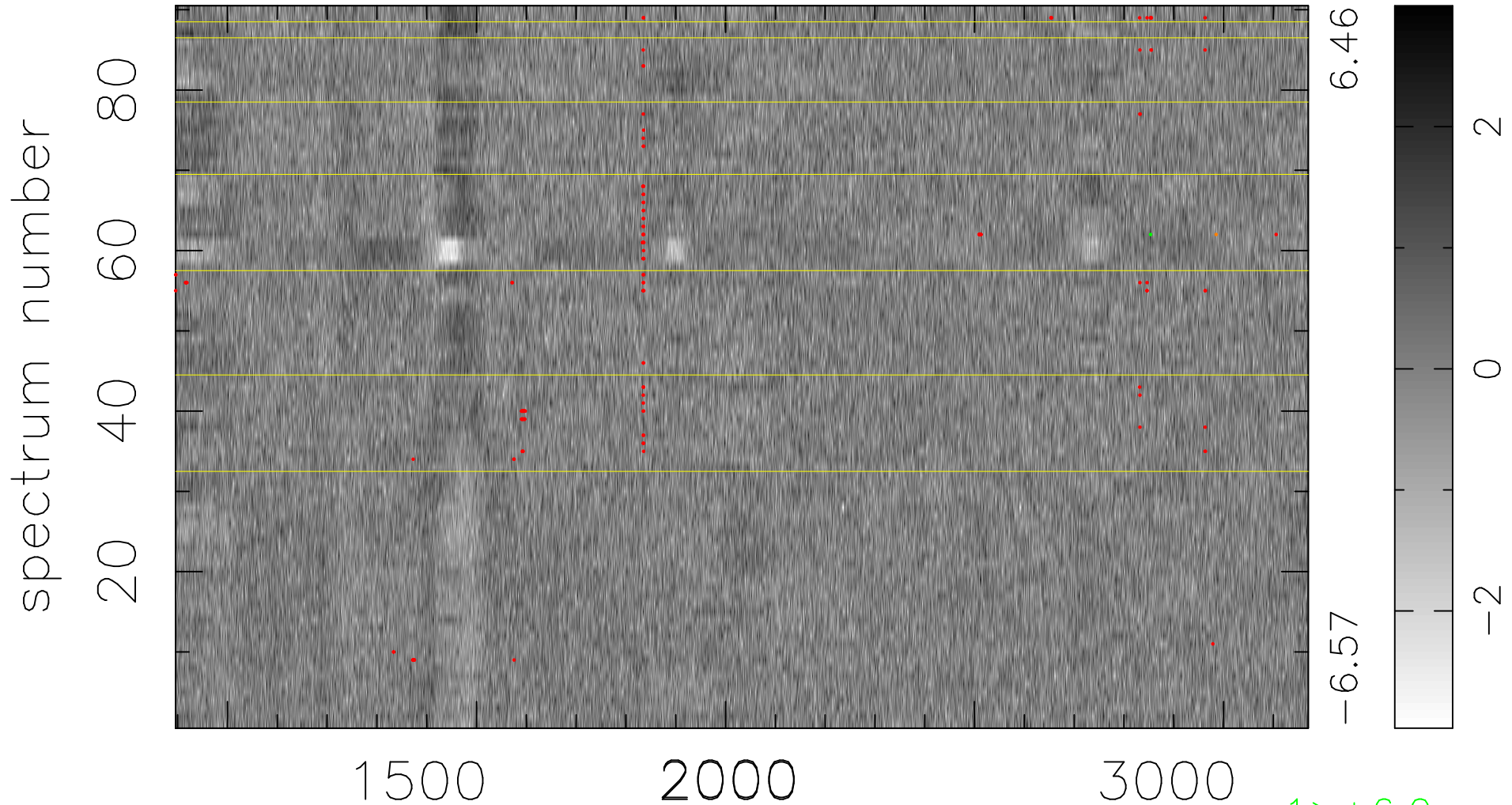


$$\chi(\lambda, t) = ( \text{Data} - \text{Model AC}_5\text{F} ) / \sigma \chi$$

$$\chi^2 / (409410 - 5302) = 0.945 \Rightarrow 1.007$$

4549x90



bad:151=0.037%  $\lambda$  (Å)  $z = 2.01661$

1 > +6.0 $\sigma$

1 < -6.0 $\sigma$