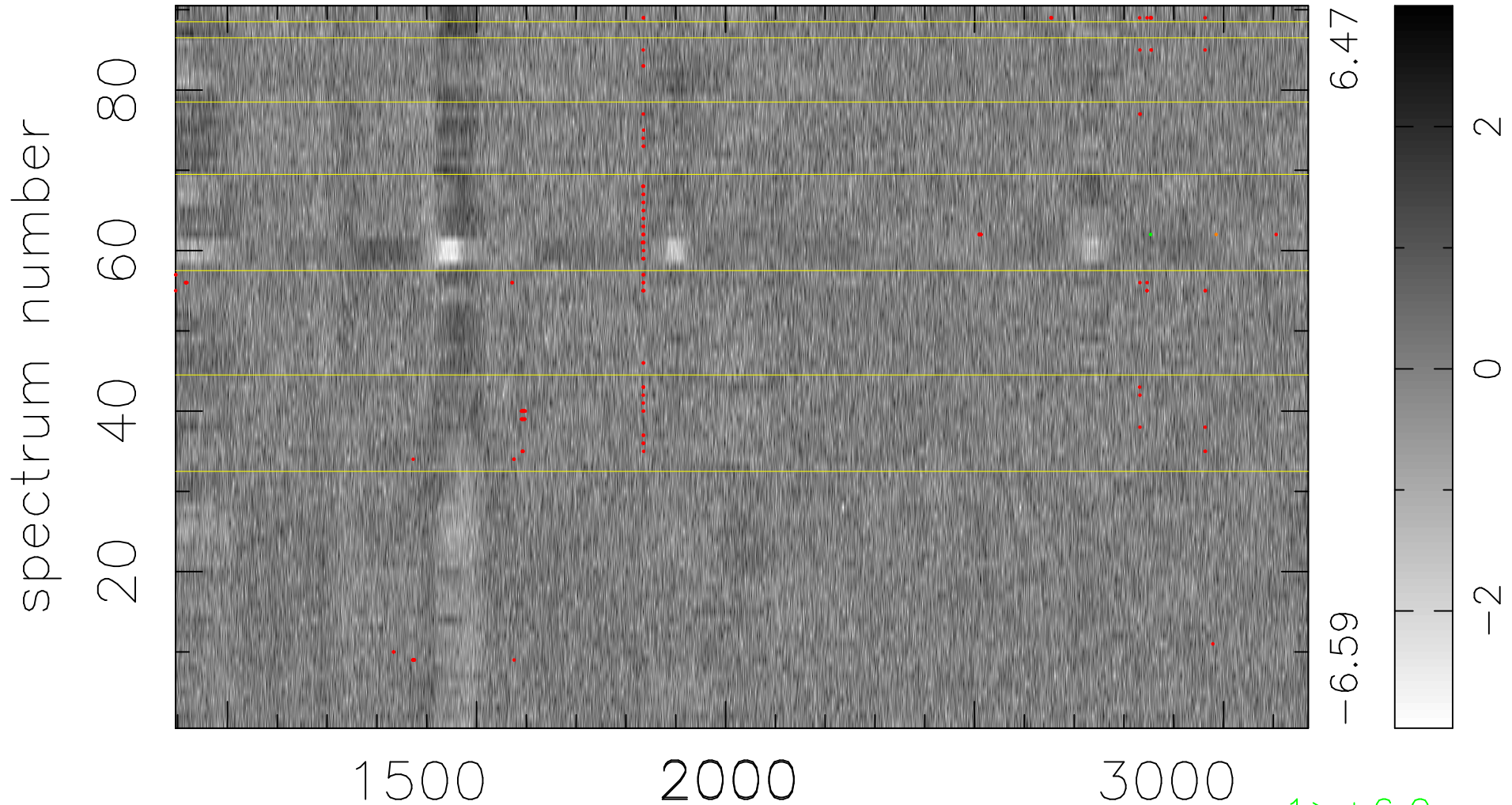


$$\chi(\lambda,t) = (\text{Data} - \text{Model } AC_5) / \sigma \chi$$

$$\chi^2 / (409410 - 5212) = 0.955 \Rightarrow 1.007$$

4549x90



bad:151=0.037% λ (Å) $z = 2.01661$

1 > +6.0 σ

1 < -6.0 σ