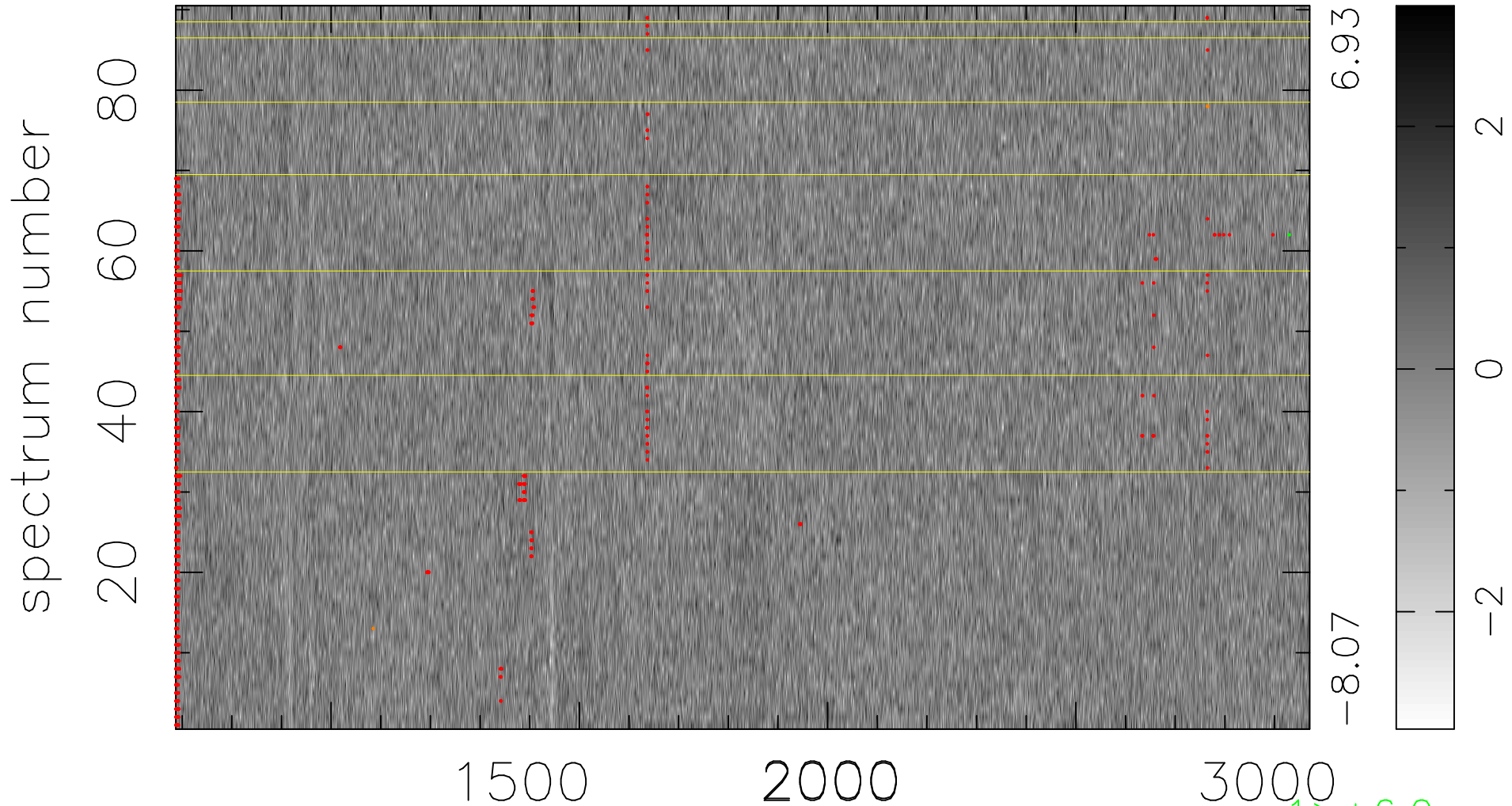


$$\chi(\lambda, t) = (\text{Data} - \text{Model } \text{AC}_5\text{B}_7\text{F}) / \sigma \chi$$

$$\chi^2 / (411120 - 5483) = 0.908 \Rightarrow 1.008$$

4568x90



bad:1124=0.27% λ (Å) $z = 2.30488$

$1 > +6.0\sigma$
 $3 < -6.0\sigma$