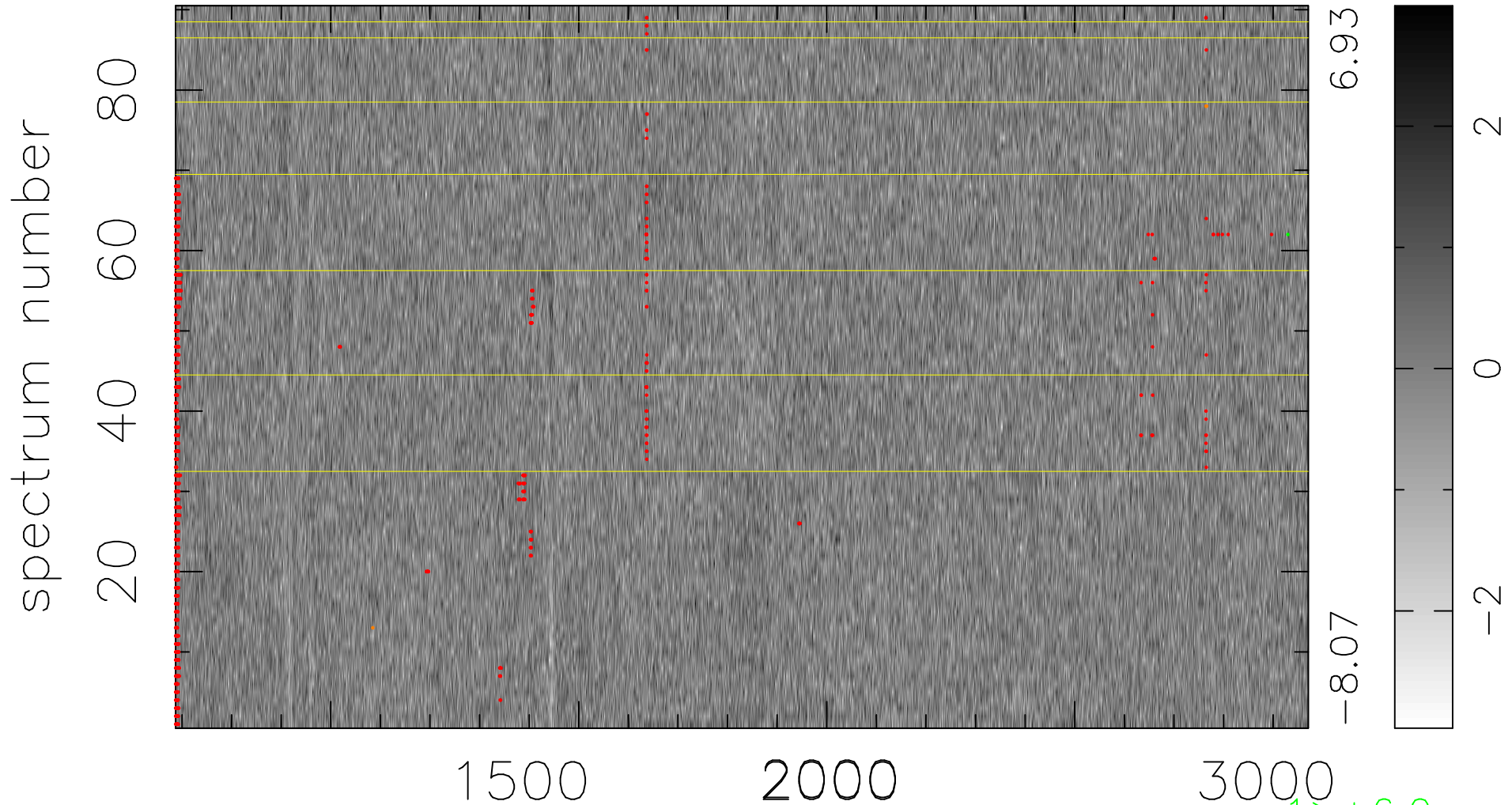


$$\chi(\lambda, t) = ( \text{Data} - \text{Model } \text{AC}_5\text{B}_7\text{F} ) / \sigma \chi$$

$$\chi^2 / (411120 - 5483) = 0.908 \Rightarrow 1.008$$

4568x90



6.93  
-8.07

2  
0  
-2

$1 > +6.0\sigma$   
 $3 < -6.0\sigma$

bad:1124=0.27%  $\lambda$  (Å)  $z = 2.30488$