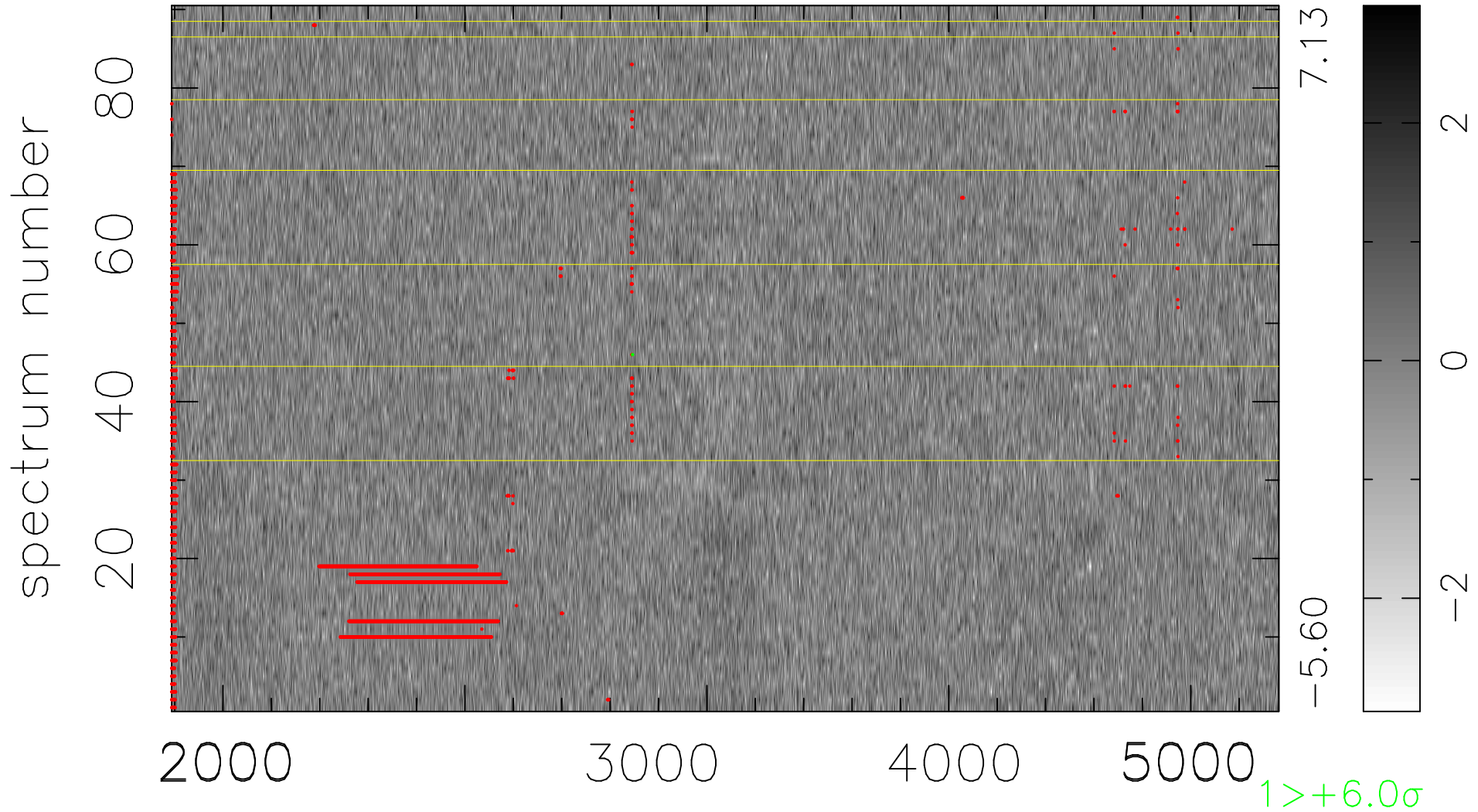


$$\chi(\lambda, t) = ( \text{Data} - \text{Model } \text{AC}_5\text{B}_4\text{F} ) / \sigma \chi$$

$$\chi^2 / (411930 - 5241) = 0.914 \Rightarrow 1.008$$

4577x90



bad:4429=1.1%

$\lambda$  (Å)  $z = 0.89457$