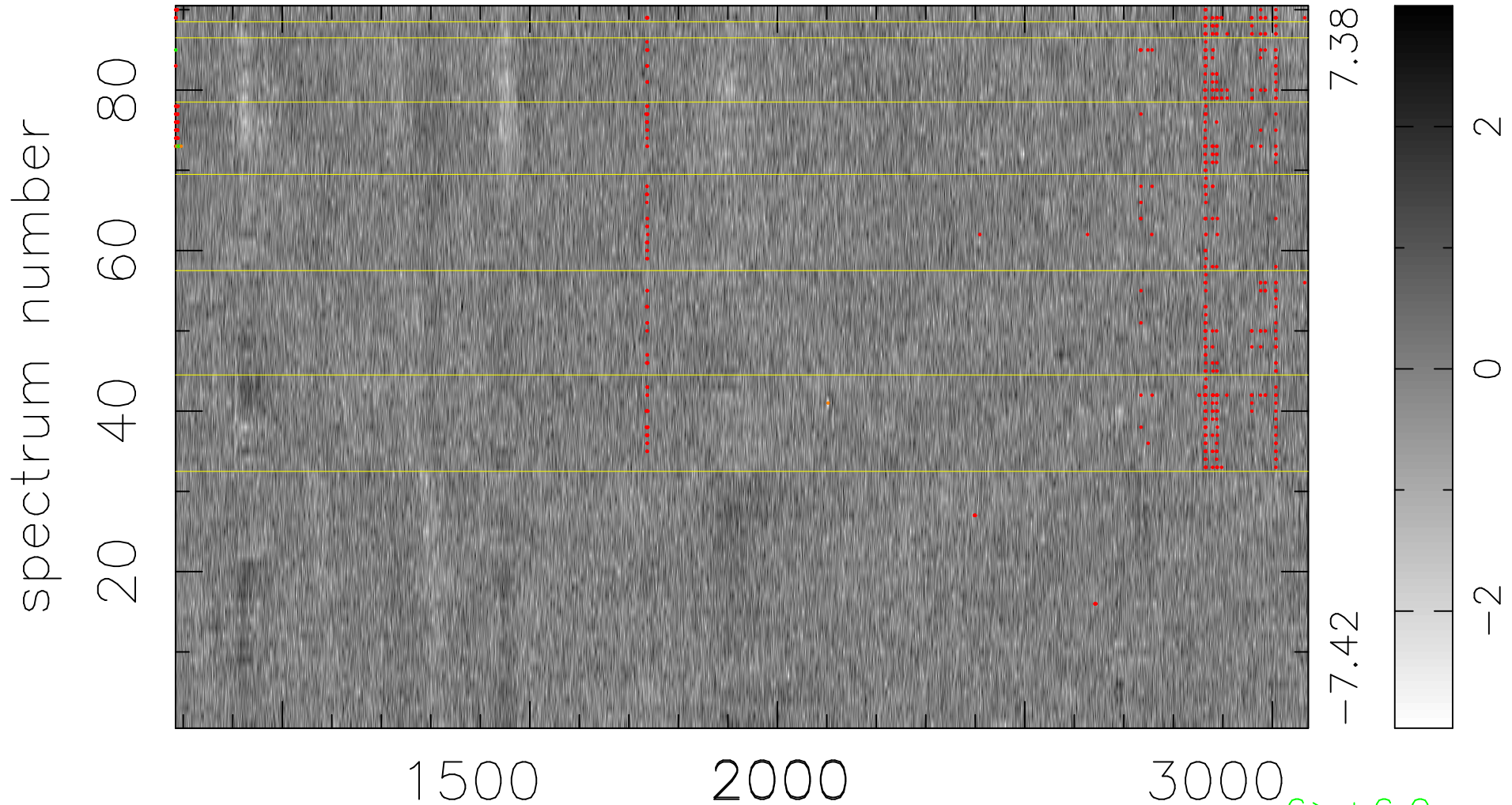


$$\chi(\lambda, t) = (\text{Data} - \text{Model AC}_5\text{F}) / \sigma \chi$$

$$\chi^2 / (411930 - 5330) = 0.941 \Rightarrow 1.007$$

4577x90



7.38

-7.42

2

0

-2

$6 > +6.0\sigma$

$6 < -6.0\sigma$

bad:511=0.12%

λ (Å) $z = 2.15574$