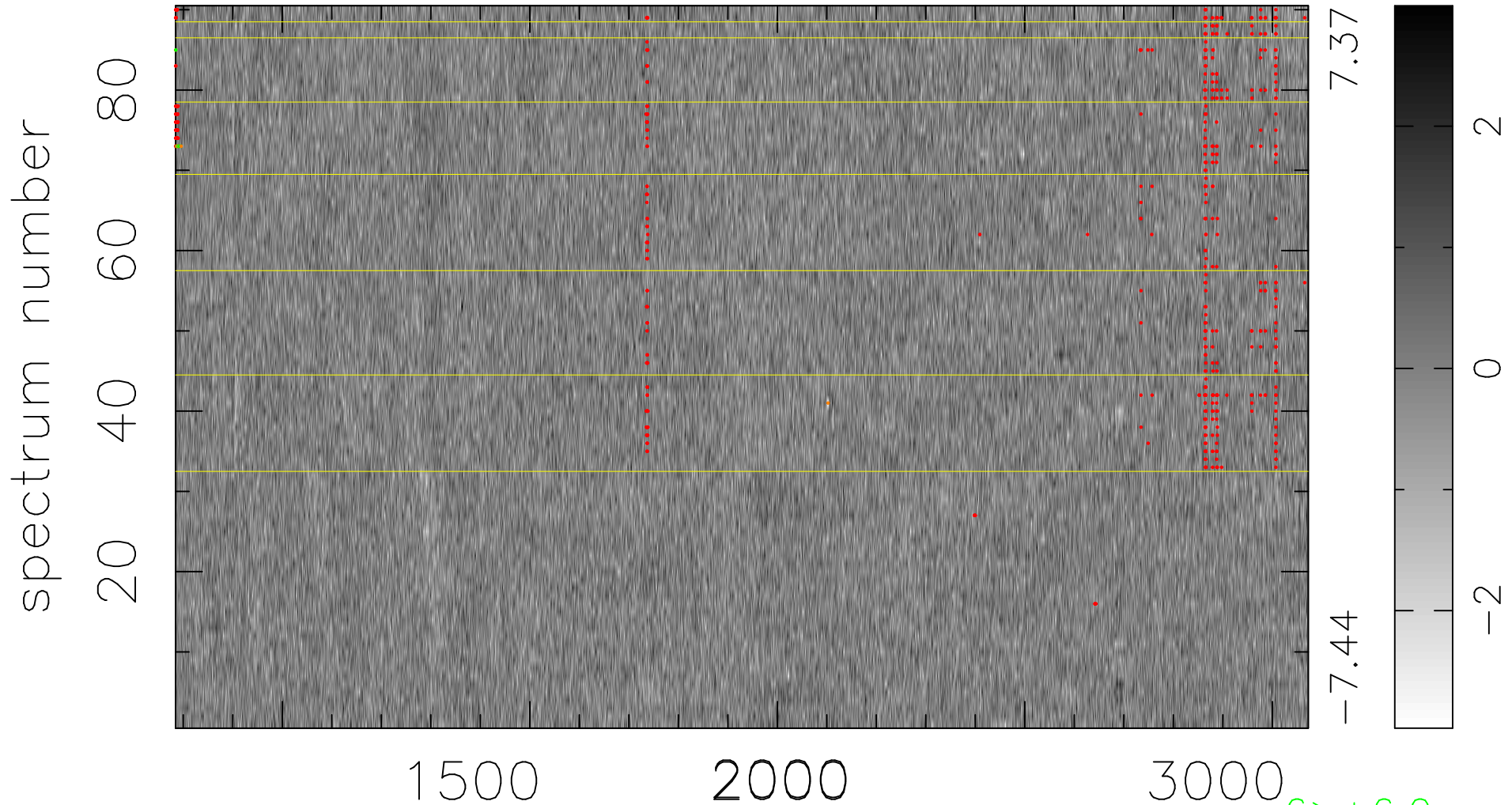


$$\chi(\lambda, t) = (\text{Data} - \text{Model AC}_5\text{B}_7\text{F}) / \sigma \chi$$

$$\chi^2 / (411930 - 5504) = 0.928 \Rightarrow 1.008$$

4577x90



bad:511=0.12%

λ (Å) $z = 2.15574$

$6 > +6.0\sigma$

$6 < -6.0\sigma$