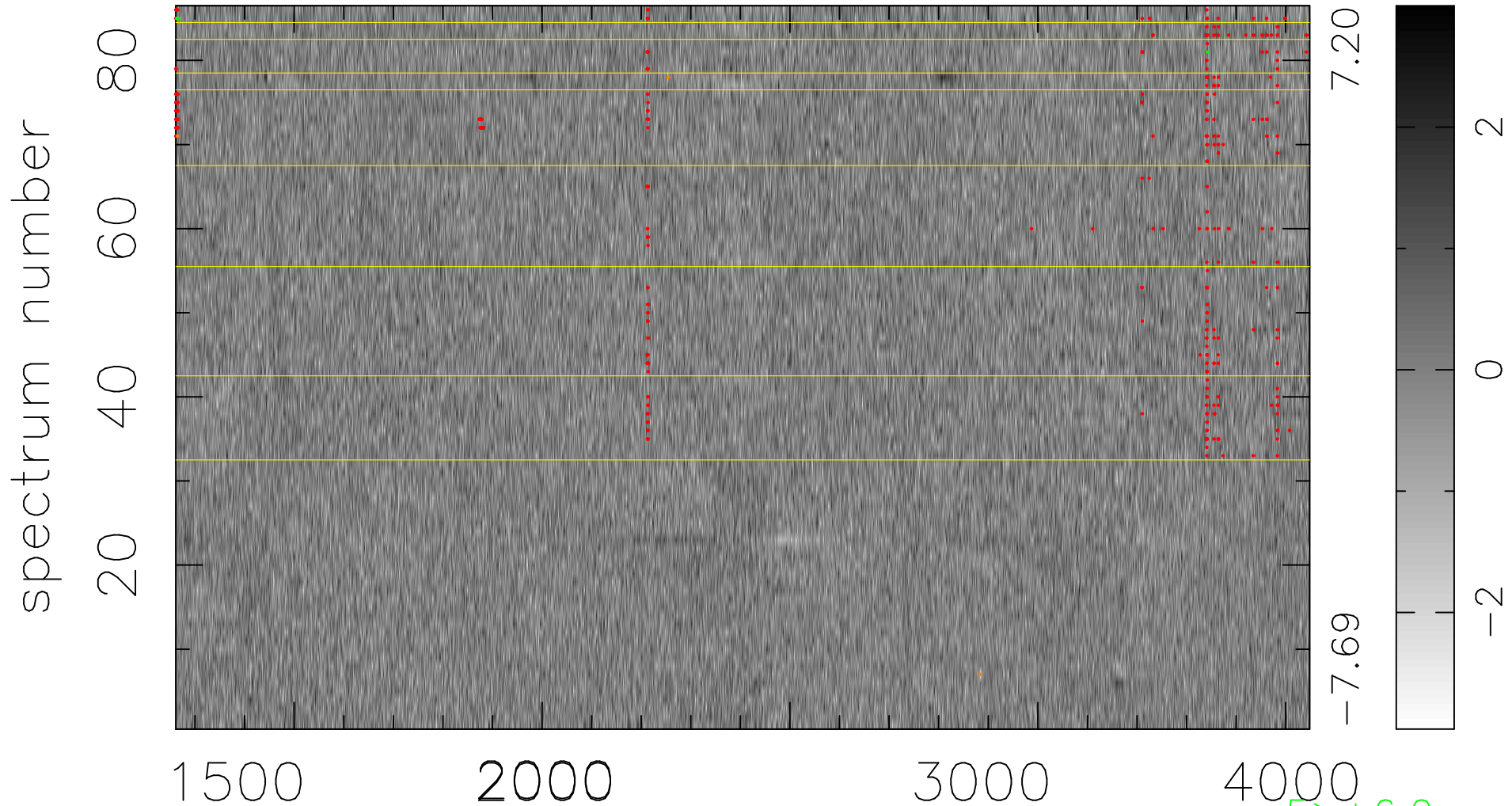


$$\chi(\lambda, t) = ( \text{Data} - \text{Model } \text{AC}_5\text{B}_4\text{F} ) / \sigma \chi$$

$$\chi^2 / (393450 - 5146) = 0.939 \Rightarrow 1.007$$

4575x86



bad:372=0.095%  $\lambda$  (Å)  $z = 1.53430$

5 > +6.0σ

6 < -6.0σ