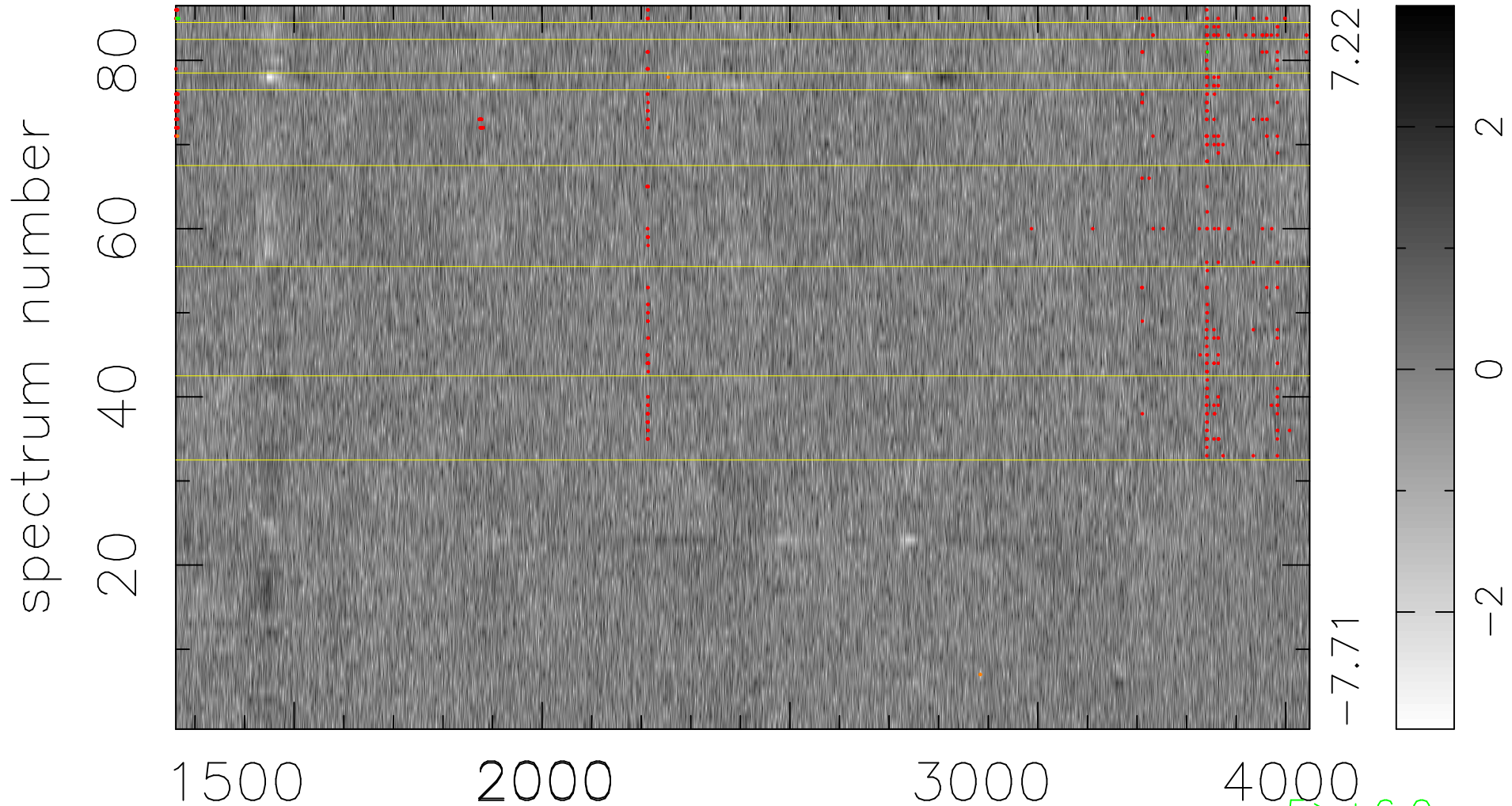


$$\chi(\lambda, t) = (\text{Data} - \text{Model AC}_5\text{F}) / \sigma \chi$$

$$\chi^2 / ((393450 - 5040) = 0.948 \Rightarrow 1.007$$

4575x86



bad:372=0.095% λ (Å) $z = 1.53430$

5 > +6.0 σ

5 < -6.0 σ