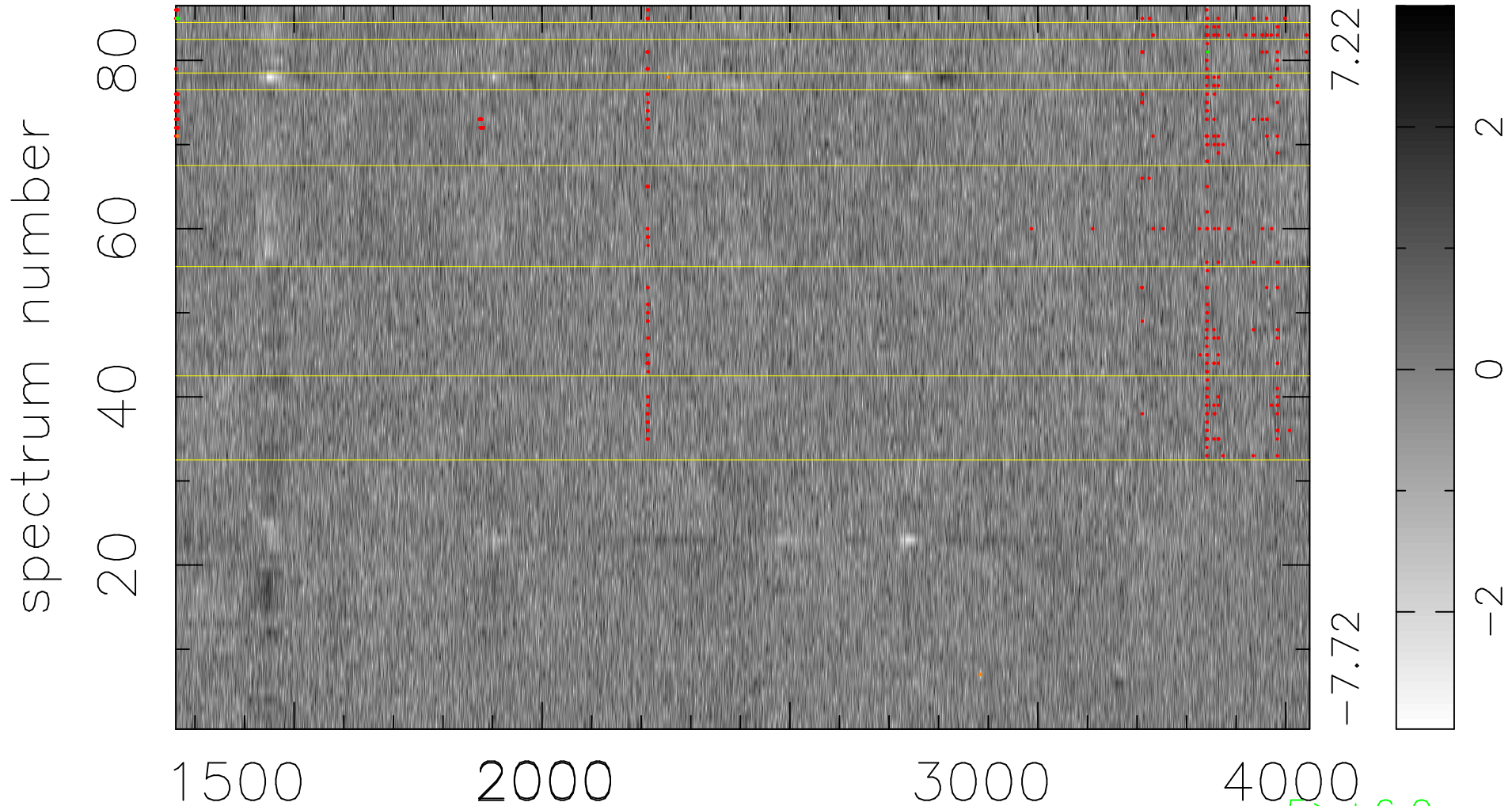


$$\chi(\lambda, t) = (\text{Data} - \text{Model } AC_5) / \sigma \chi$$

$\chi^2 / (393450 - 4954) = 0.952 \Rightarrow 1.008$

4575x86



bad:372=0.095% λ (Å) $z = 1.53430$

5 > +6.0σ

5 < -6.0σ