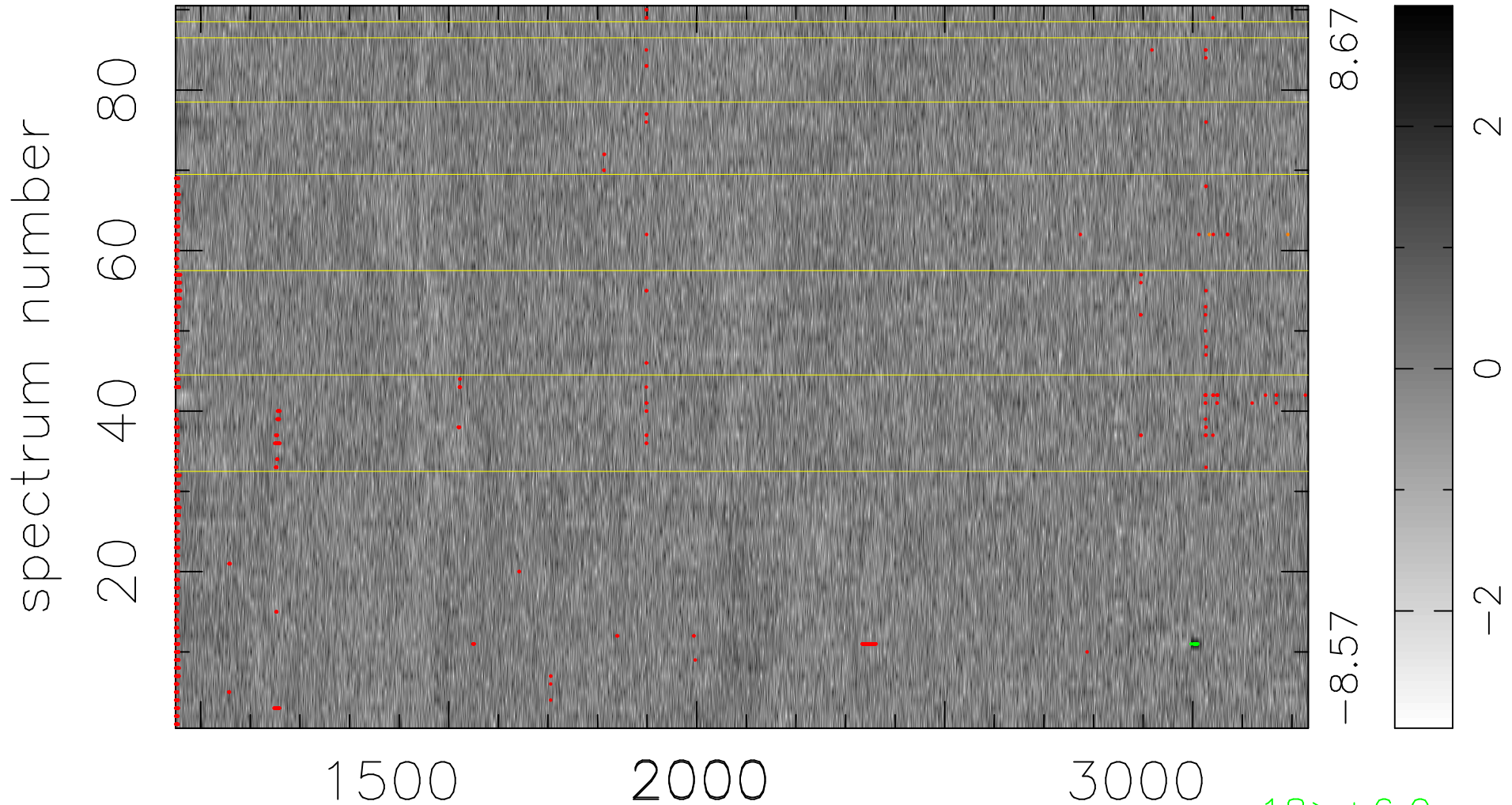


$$\chi(\lambda, t) = ( \text{Data} - \text{Model } \text{AC}_5\text{B}_6\text{F} ) / \sigma \chi$$

$$\chi^2 / (411120 - 5386) = 0.935 \Rightarrow 1.008$$

4568x90



bad:1067=0.26%  $\lambda$  (Å)  $z = 1.92976$

18 > +6.0σ  
2 < -6.0σ