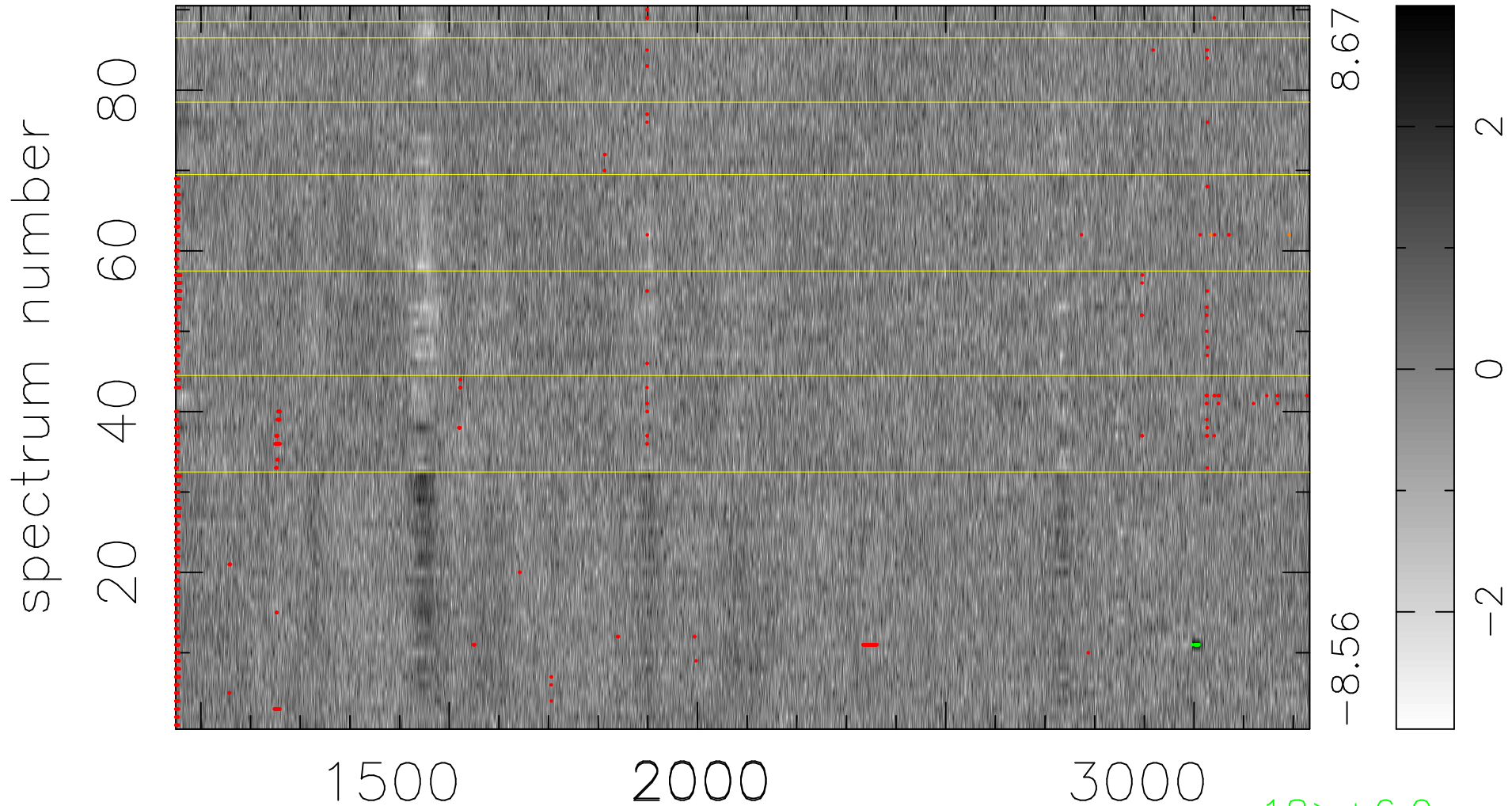


$$\chi(\lambda,t) = ( \text{Data} - \text{Model } AC_5 ) / \sigma \chi$$

$$\chi^2 / (411120 - 5146) = 0.959 \Rightarrow 1.007$$

4568x90



bad:1067=0.26%  $\lambda$  (Å)  $z = 1.92976$

18 > +6.0 $\sigma$

2 < -6.0 $\sigma$