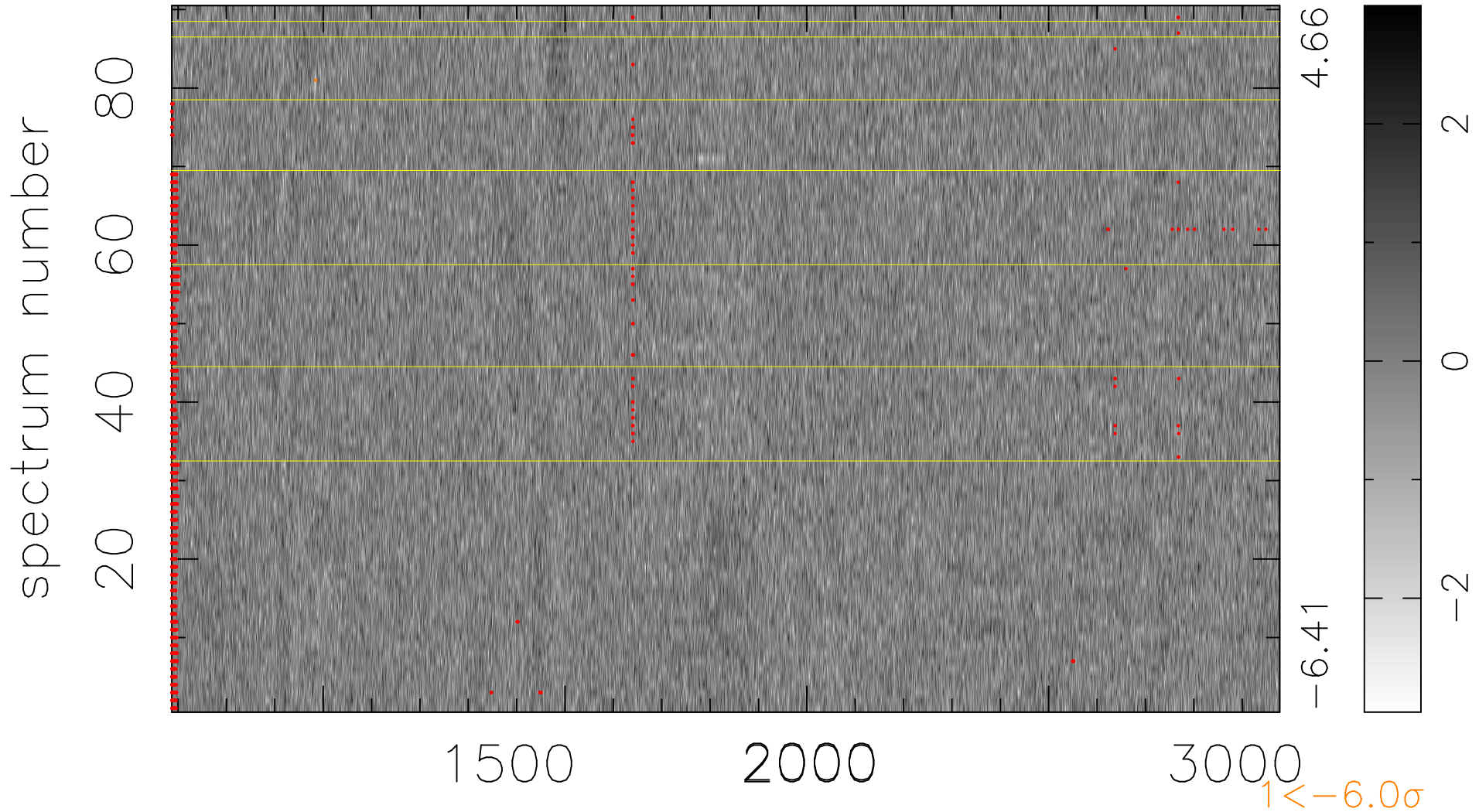


$$\chi(\lambda, t) = ( \text{Data} - \text{Model } \text{AC}_5\text{B}_7\text{F} ) / \sigma \chi$$

$$\chi^2 / (412380 - 5478) = 0.895 \Rightarrow 1.007$$

4582x90



bad:1503=0.36%  $\lambda$  (Å)  $z = 2.29978$