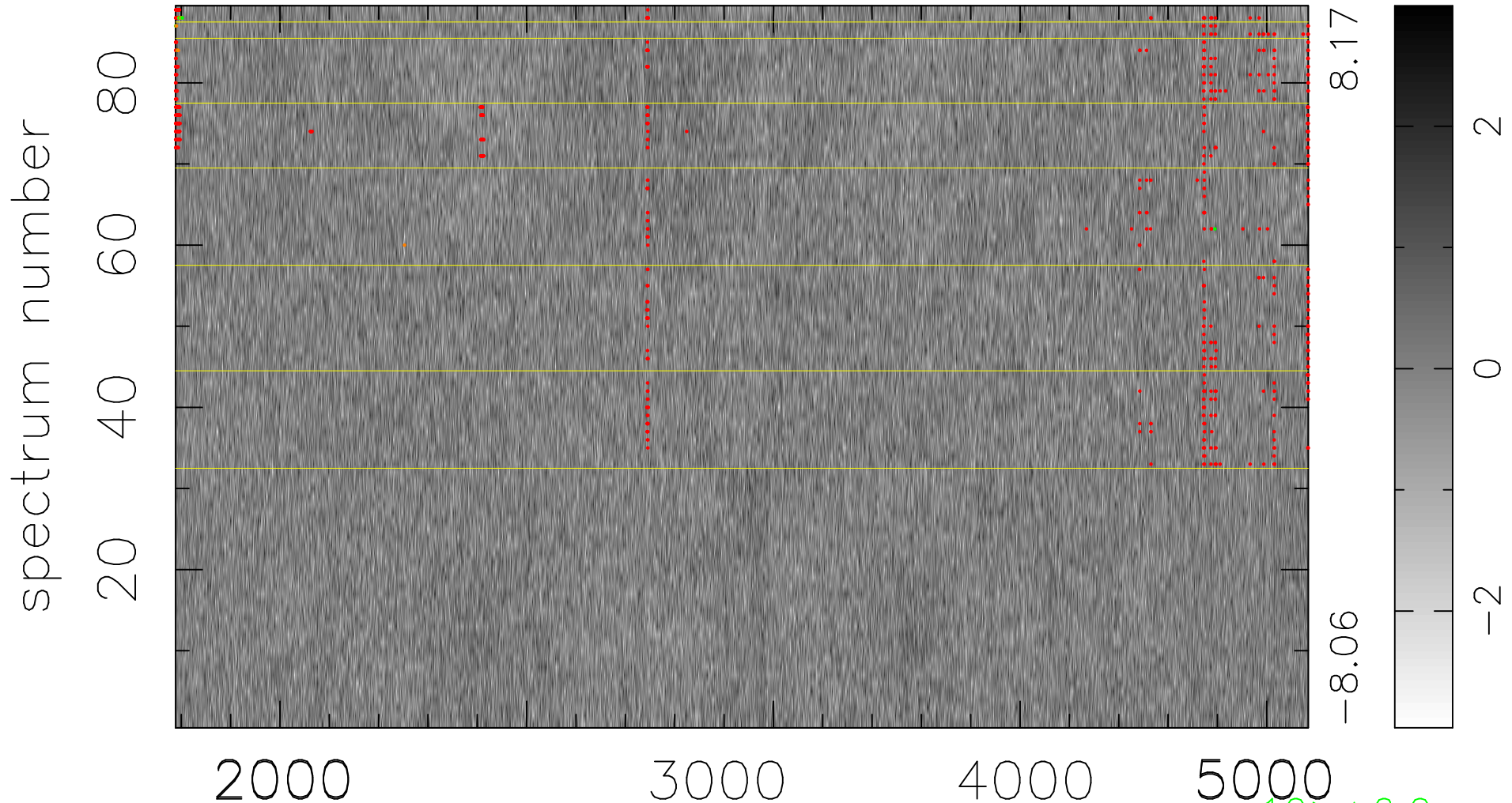


$$\chi(\lambda, t) = ( \text{Data} - \text{Model } \text{AC}_5\text{B}_4\text{F} ) / \sigma \chi$$

$$\chi^2 / (408688 - 5242) = 0.969 \Rightarrow 1.006$$

4592x89



bad:690=0.17%

$\lambda$  (Å)  $z = 0.98379$

10 > +6.0σ

11 < -6.0σ