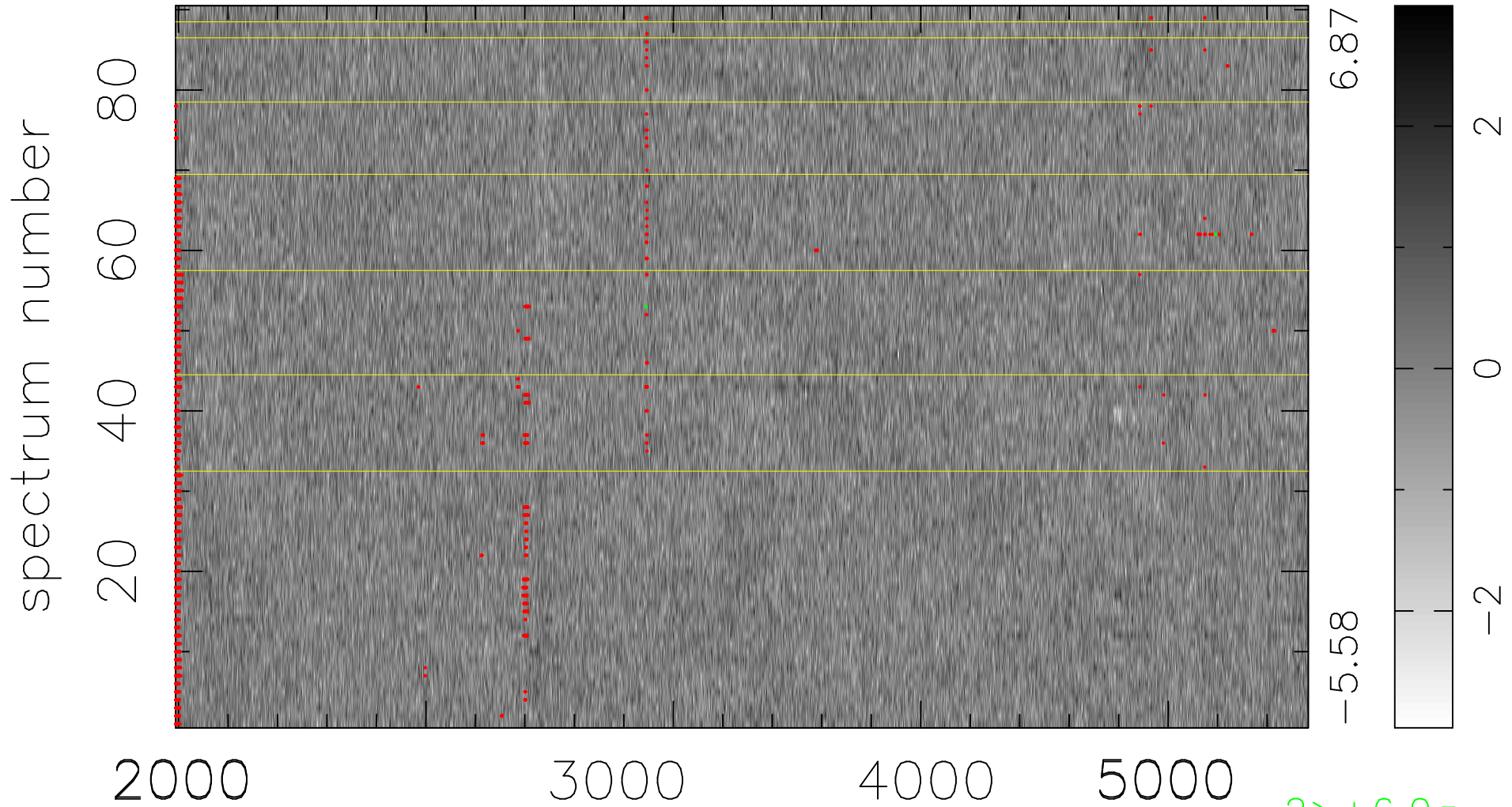


$$\chi(\lambda,t) = (\text{Data} - \text{Model } AC_5) / \sigma \chi$$

$\chi^2 / (412110 - 4865) = 0.923 \Rightarrow 1.007$

4579x90



6.87
-5.58

2
0
-2

bad:1613=0.39% λ (Å) $z = 0.80829$

$2 > +6.0\sigma$