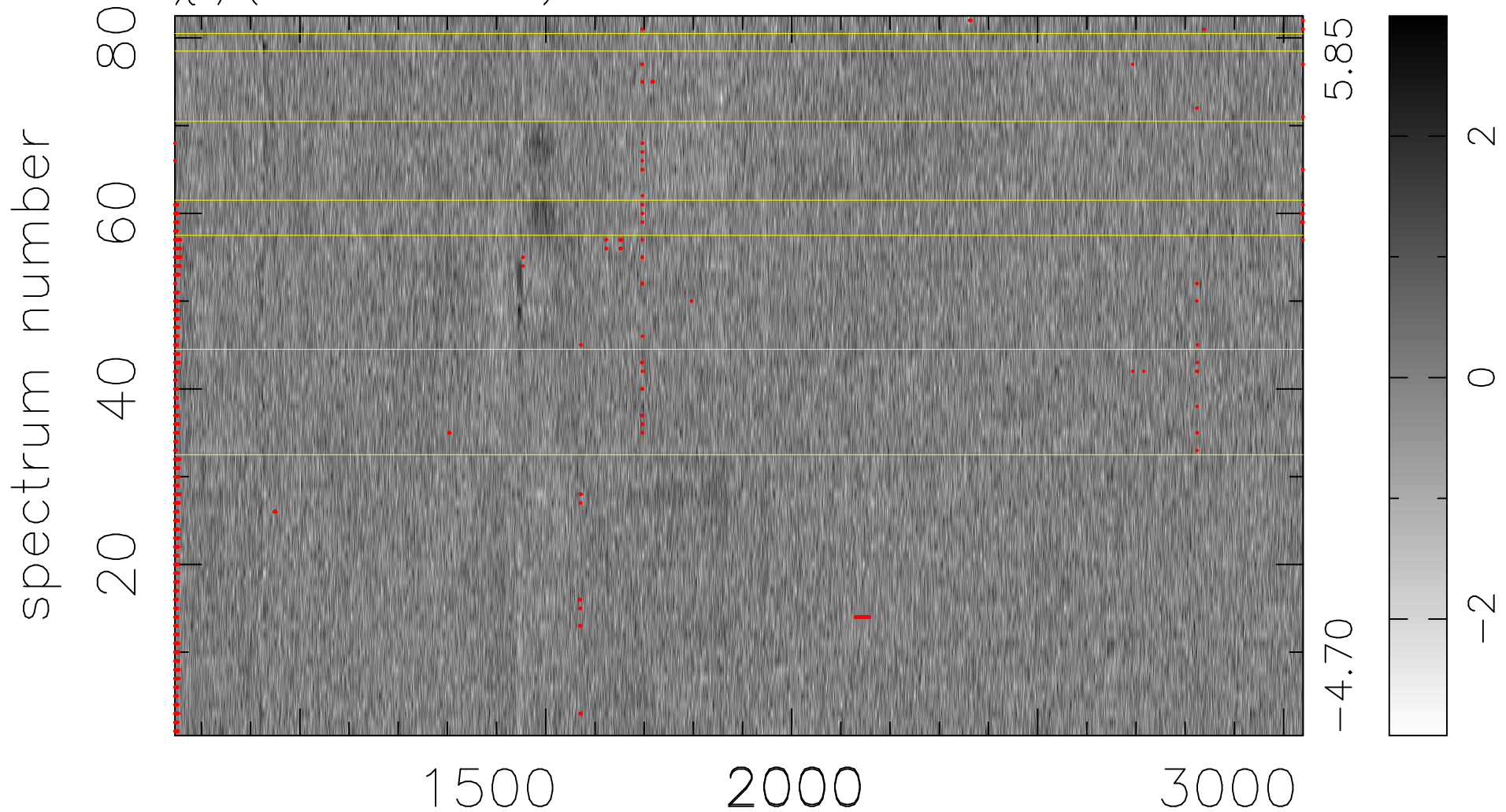


$$\chi(\lambda, t) = ( \text{Data} - \text{Model } \text{AC}_5\text{B}_7\text{F} ) / \sigma \chi$$

$$\chi^2 / (376216 - 5431) = 0.924 \Rightarrow 1.008$$

4588x82



bad:1052=0.28%  $\lambda$  (Å)  $z = 2.21584$