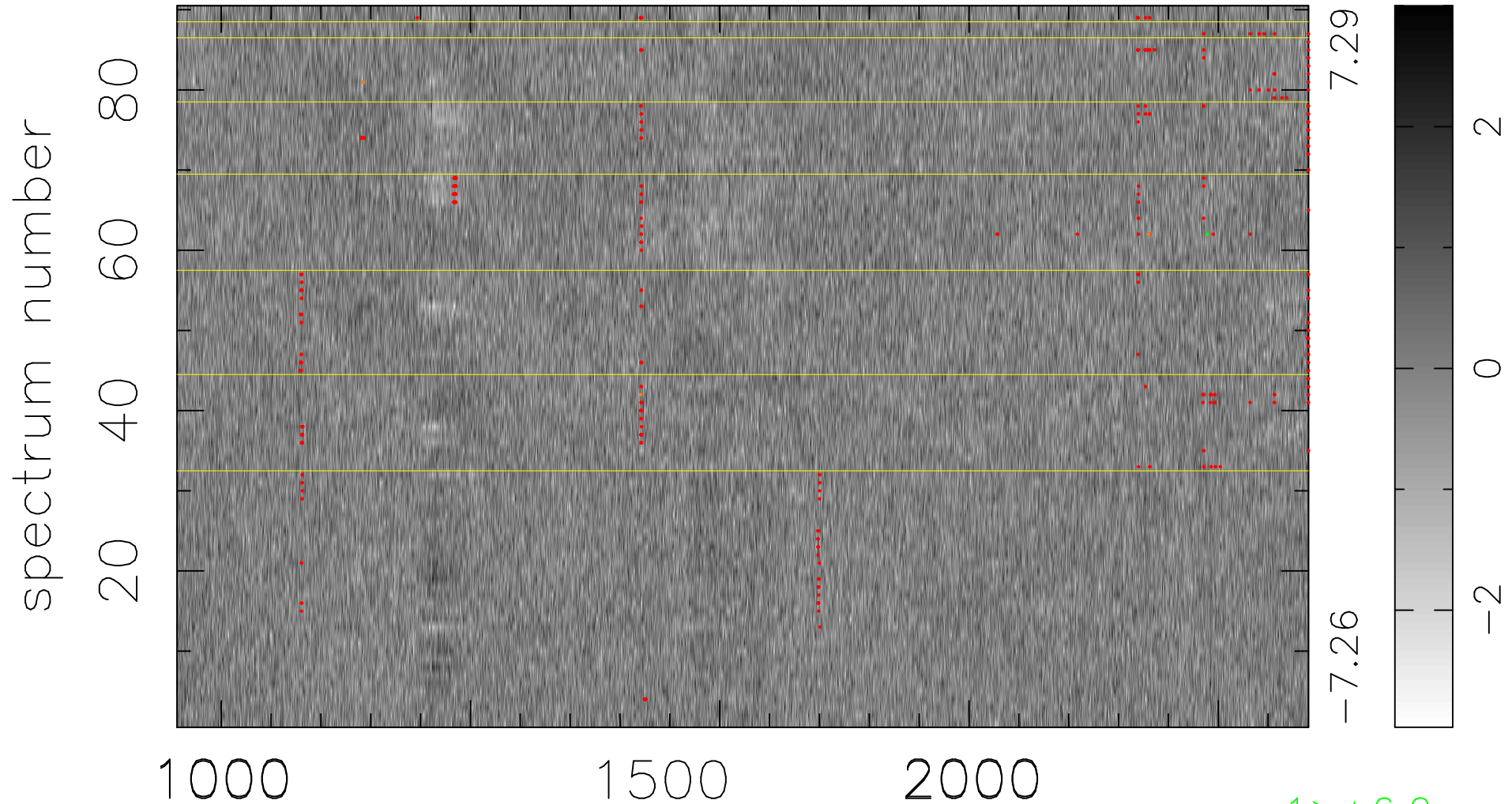


$$\chi(\lambda, t) = (\text{Data} - \text{Model AC}_5\text{F}) / \sigma \chi$$

$$\chi^2 / (408600 - 5206) = 0.922 \Rightarrow 1.008$$

4540x90



bad:369=0.090% λ (Å) $z = 2.78460$

1 > +6.0 σ

3 < -6.0 σ