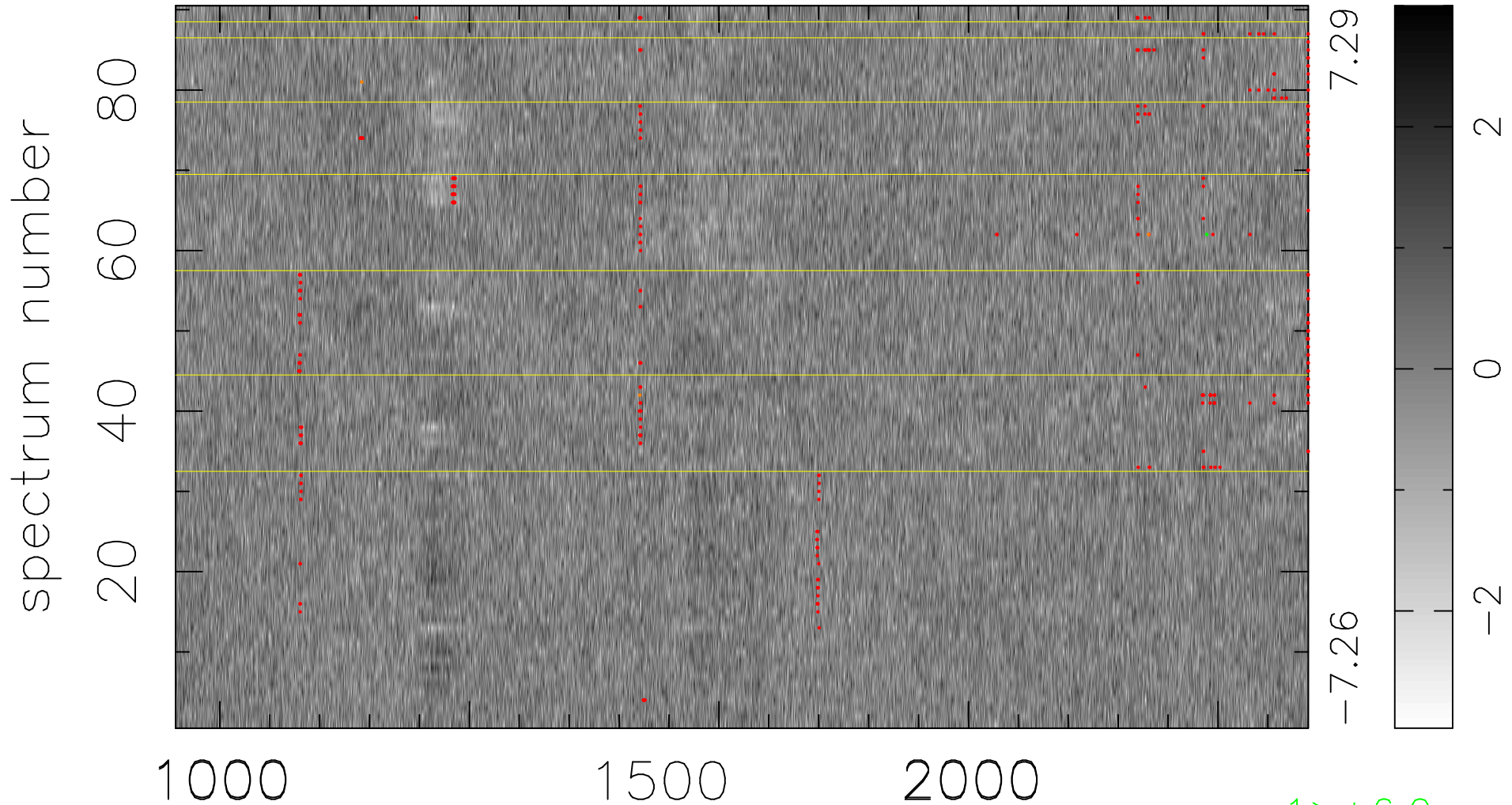


$$\chi(\lambda,t) = ( \text{Data} - \text{Model } AC_5 ) / \sigma \chi$$

$$\chi^2 / (408600 - 5116) = 0.923 \Rightarrow 1.008$$

4540x90



bad:369=0.090%  $\lambda$  (Å)  $z = 2.78460$

1 > +6.0σ  
3 < -6.0σ