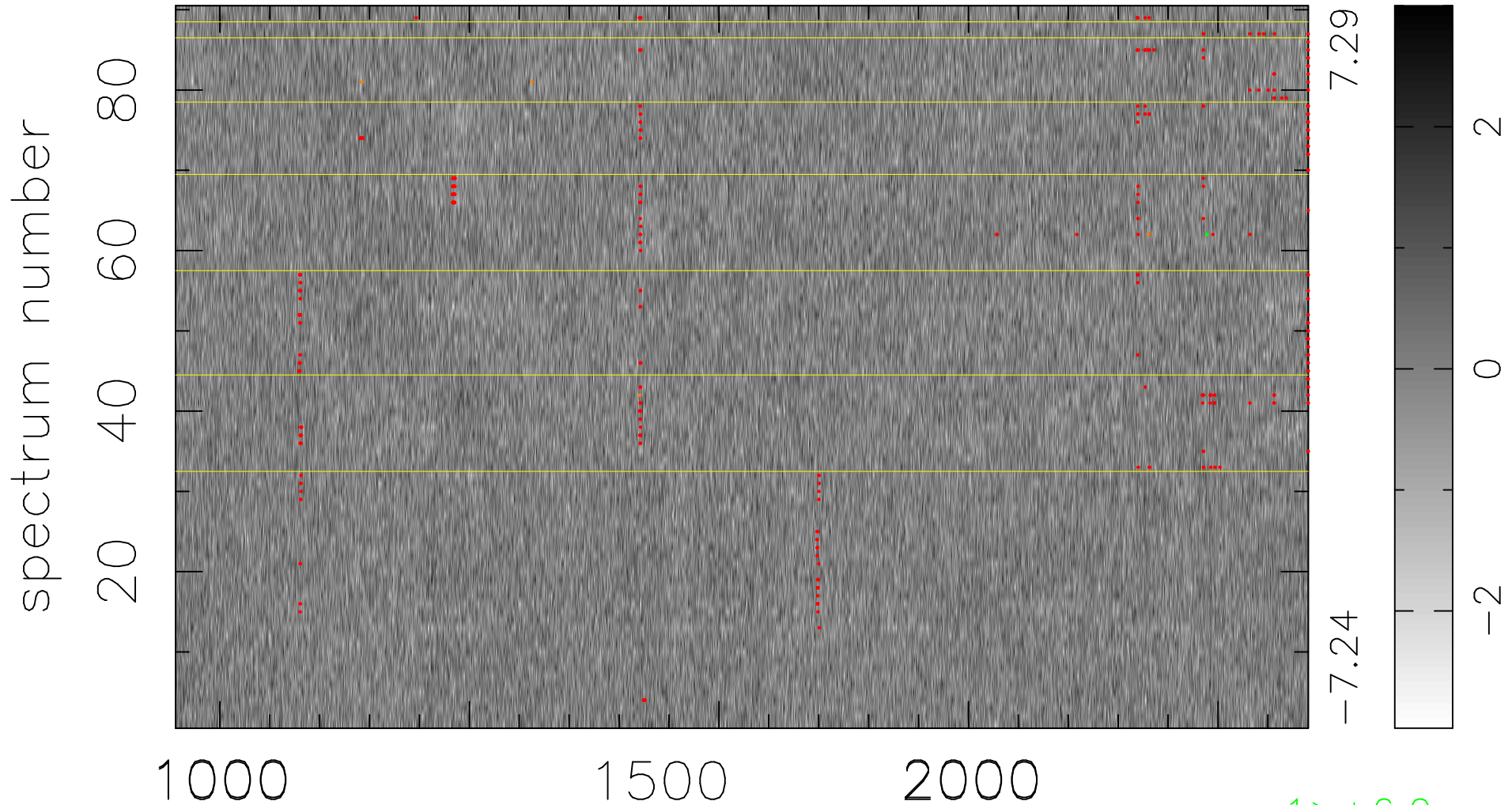


$$\chi(\lambda,t) = ( \text{Data} - \text{Model } \text{AC}_5\text{B}_6\text{F} ) / \sigma \chi$$

$$\chi^2 / (408600 - 5342) = 0.915 \Rightarrow 1.008$$

4540x90



bad:369=0.090%  $\lambda$  (Å)  $z = 2.78460$

1 > +6.0 $\sigma$

4 < -6.0 $\sigma$