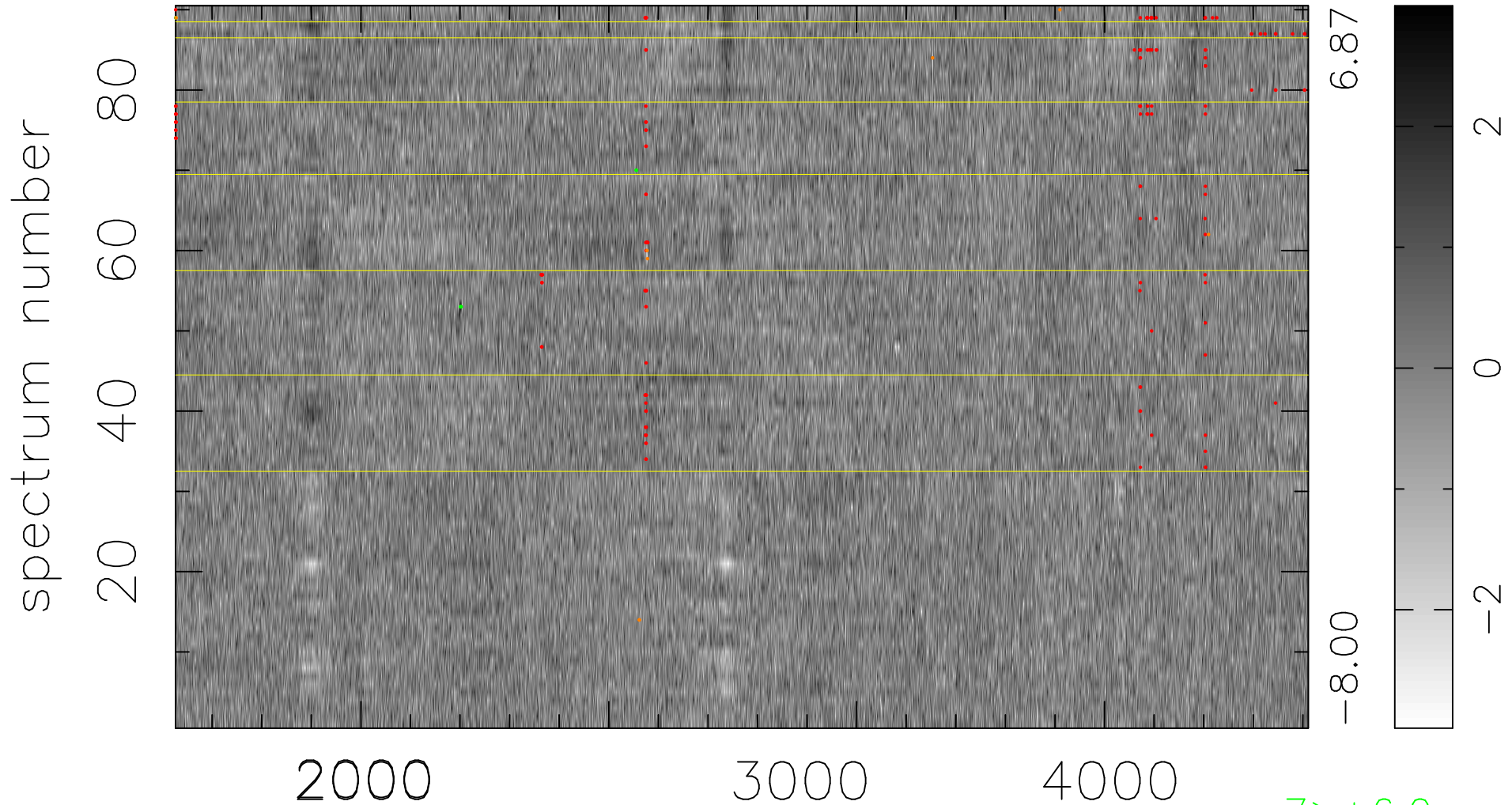


$$\chi(\lambda, t) = (\text{Data} - \text{Model AC}_5\text{F}) / \sigma \chi$$

$$\chi^2 / (411300 - 4970) = 0.891 \Rightarrow 1.008$$

4570x90



bad:162=0.039% λ (Å) $z = 1.14551$

7 > +6.0 σ

9 < -6.0 σ