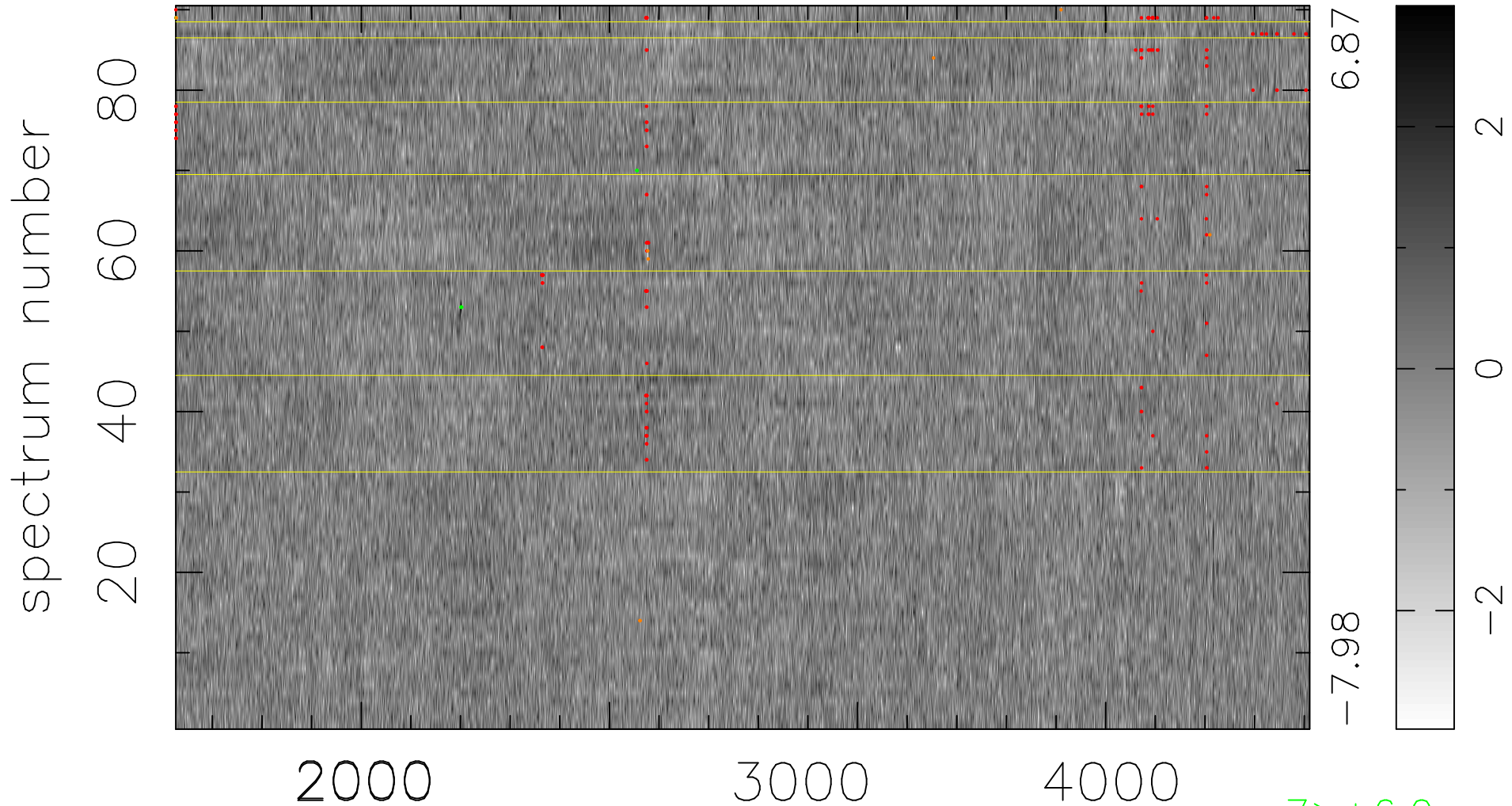


$$\chi(\lambda, t) = (\text{Data} - \text{Model } \text{AC}_5\text{B}_3\text{F}) / \sigma \chi$$

$$\chi^2 / (411300 - 5123) = 0.881 \Rightarrow 1.009$$

4570x90



bad:162=0.039% λ (Å) $z = 1.14551$

7 > +6.0 σ

9 < -6.0 σ