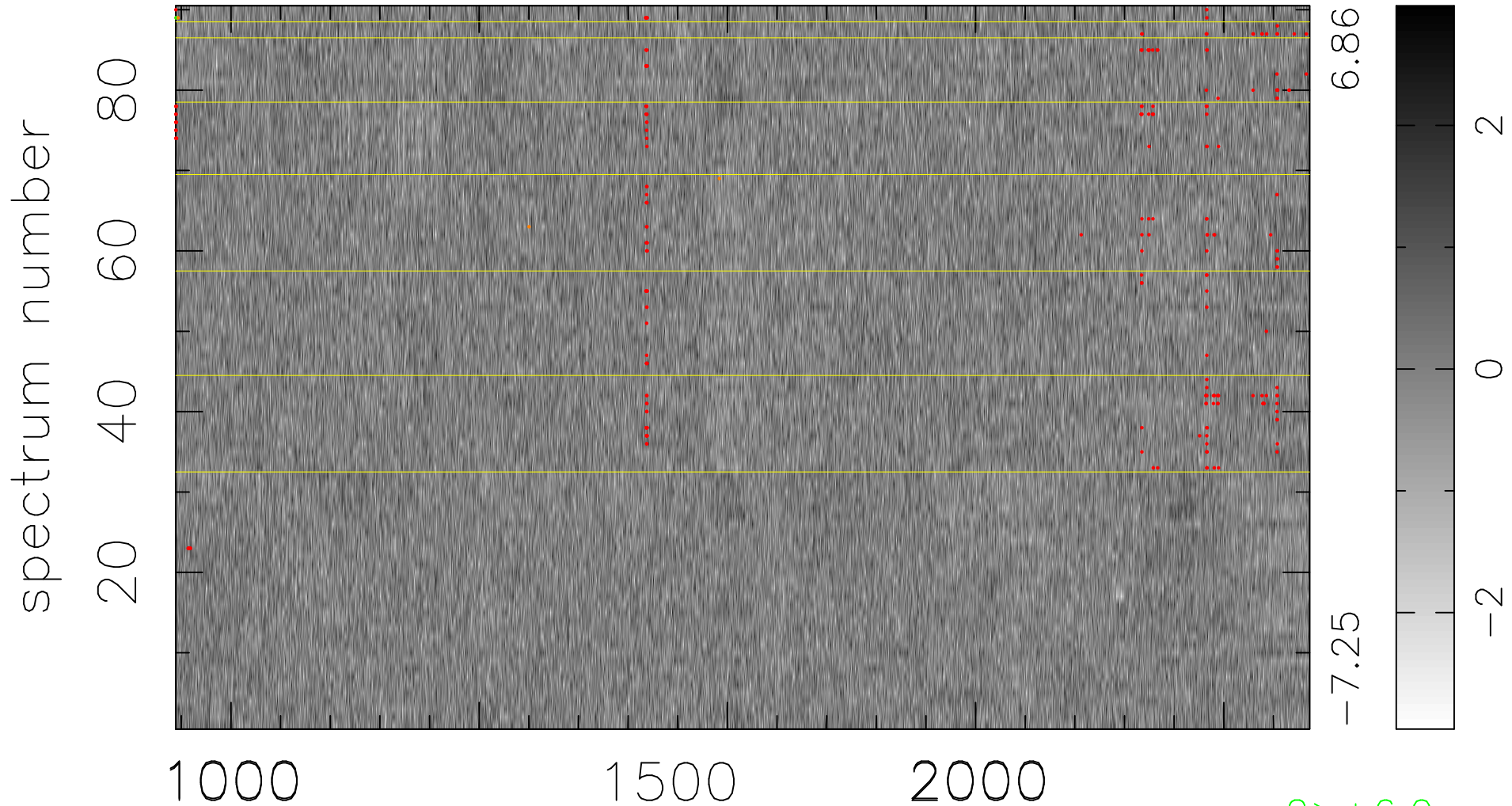


$$\chi(\lambda, t) = (\text{Data} - \text{Model } \text{AC}_5\text{B}_6\text{F}) / \sigma \chi$$

$$\chi^2 / (411210 - 5394) = 0.954 \Rightarrow 1.003$$

4569x90



bad:241=0.059% λ (Å) $z = 2.79338$

2 > +6.0 σ

4 < -6.0 σ