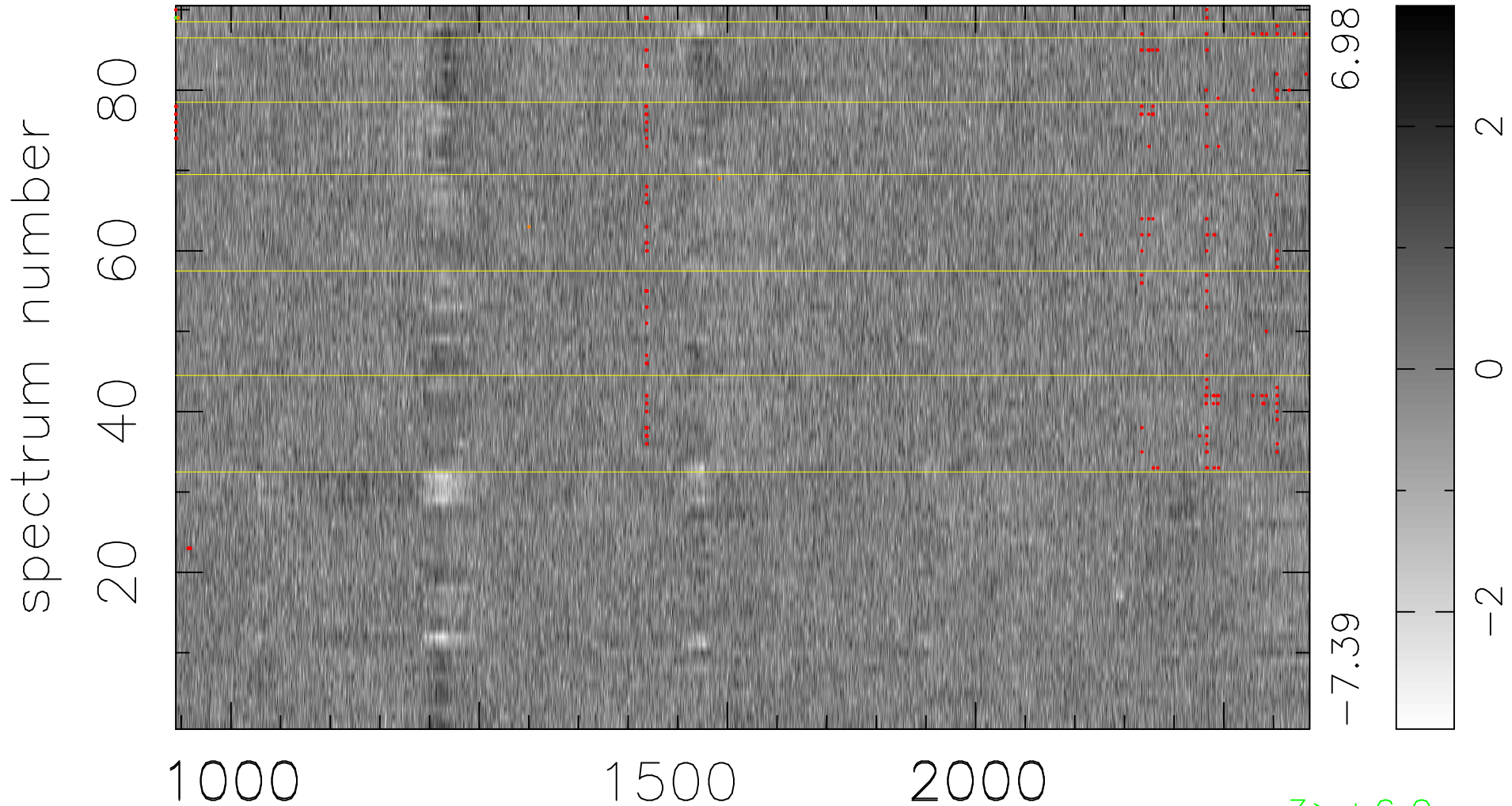


$$\chi(\lambda,t) = ( \text{Data} - \text{Model } AC_5 ) / \sigma \chi$$

$$\chi^2 / (411210 - 5155) = 0.987 \Rightarrow 1.006$$

4569x90



bad:241=0.059%  $\lambda$  (Å)  $z = 2.79338$

3 > +6.0σ

4 < -6.0σ