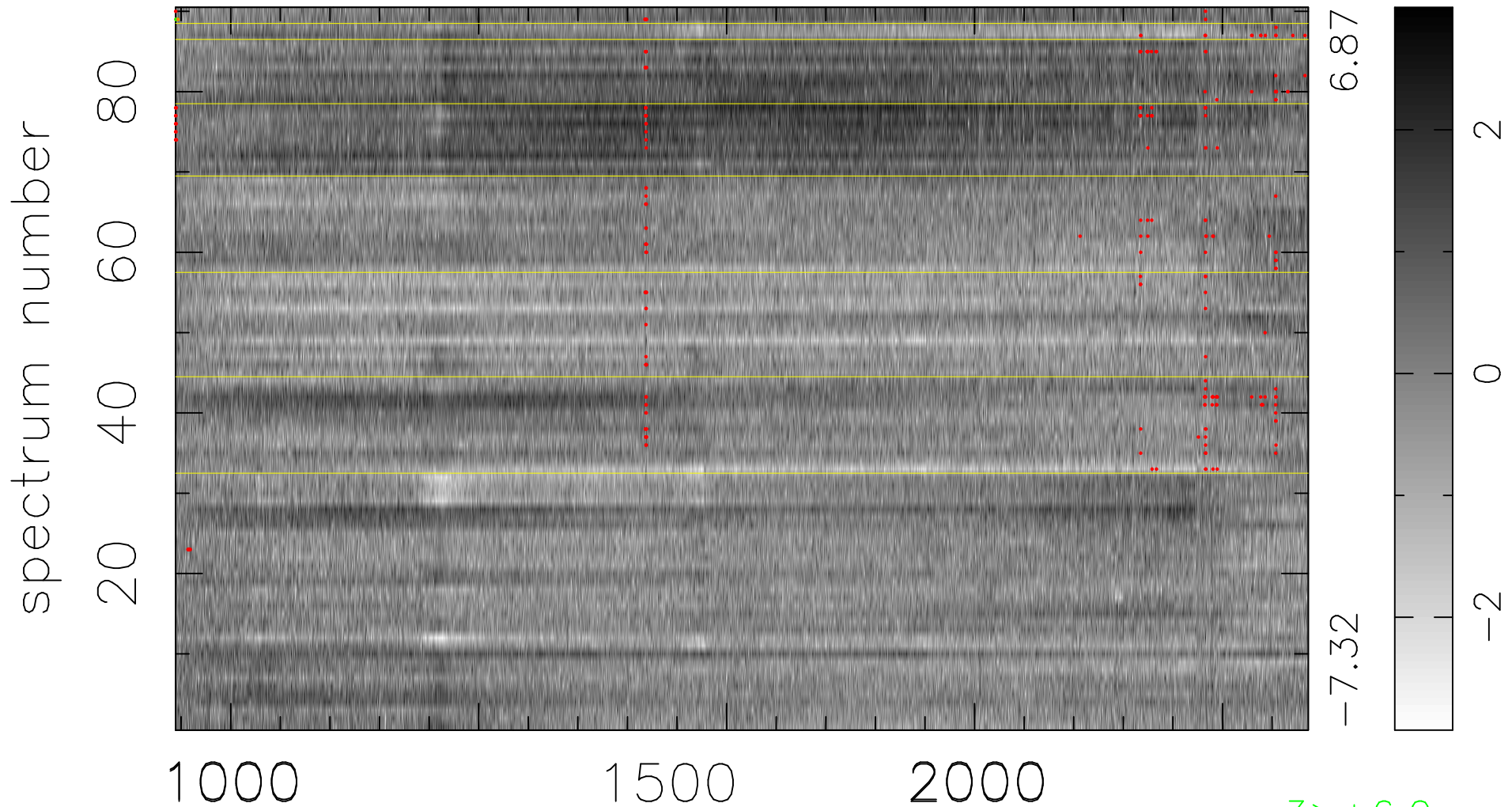


$$\chi(\lambda, t) = ( \text{Data} - \text{Model A} ) / \sigma \chi$$

$\chi^2 / (411210 - 5155) = 1.497 \Rightarrow 1.002$

4569x90



bad:241=0.059%  $\lambda$  (Å)  $z = 2.79338$

3 > +6.0σ

2 < -6.0σ