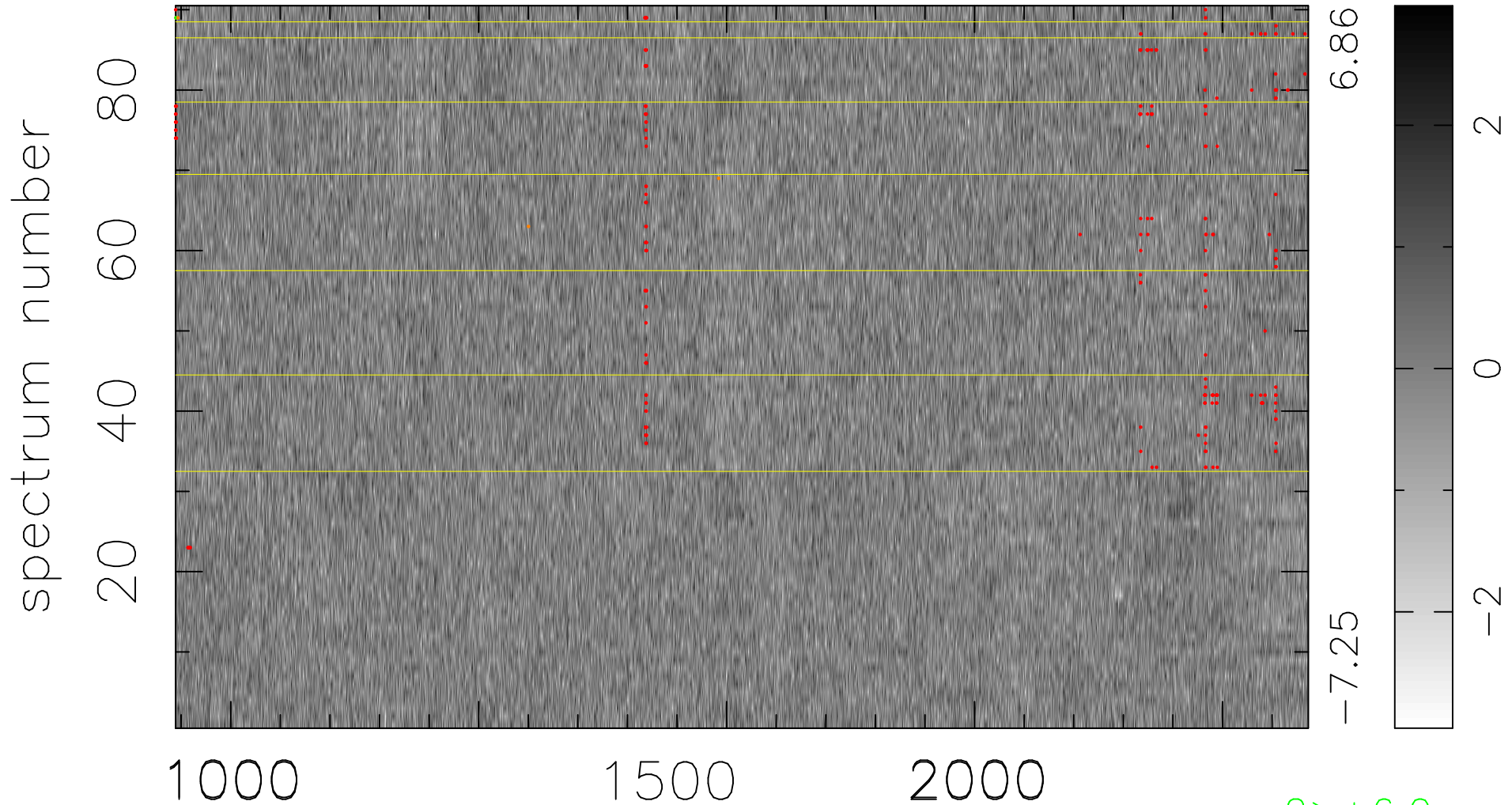


$$\chi(\lambda, t) = ( \text{Data} - \text{Model } \text{AC}_5\text{B}_6\text{F} ) / \sigma \chi$$

$$\chi^2 / (411210 - 5394) = 0.954 \Rightarrow 1.003$$

4569x90



bad:241=0.059%  $\lambda$  (Å)  $z = 2.79338$

2 > +6.0 $\sigma$

4 < -6.0 $\sigma$