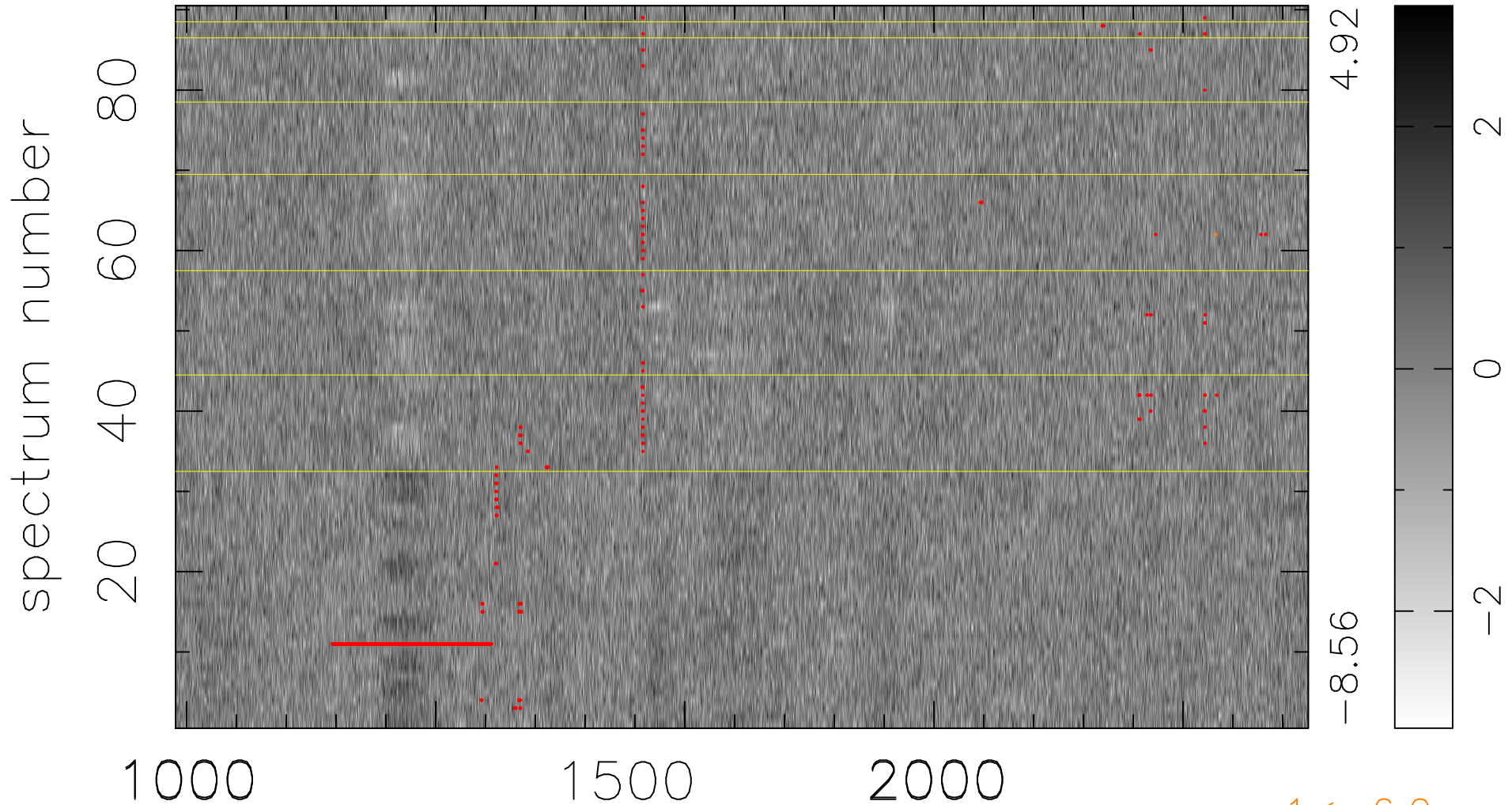


$$\chi(\lambda, t) = ( \text{Data} - \text{Model AC}_5\text{F} ) / \sigma \chi$$

$$\chi^2 / (409230 - 5305) = 0.902 \Rightarrow 1.007$$

4547x90



4.92  
-8.56

2  
0  
-2

1 < -6.0σ

bad:852=0.21%

λ (Å) z = 2.65912