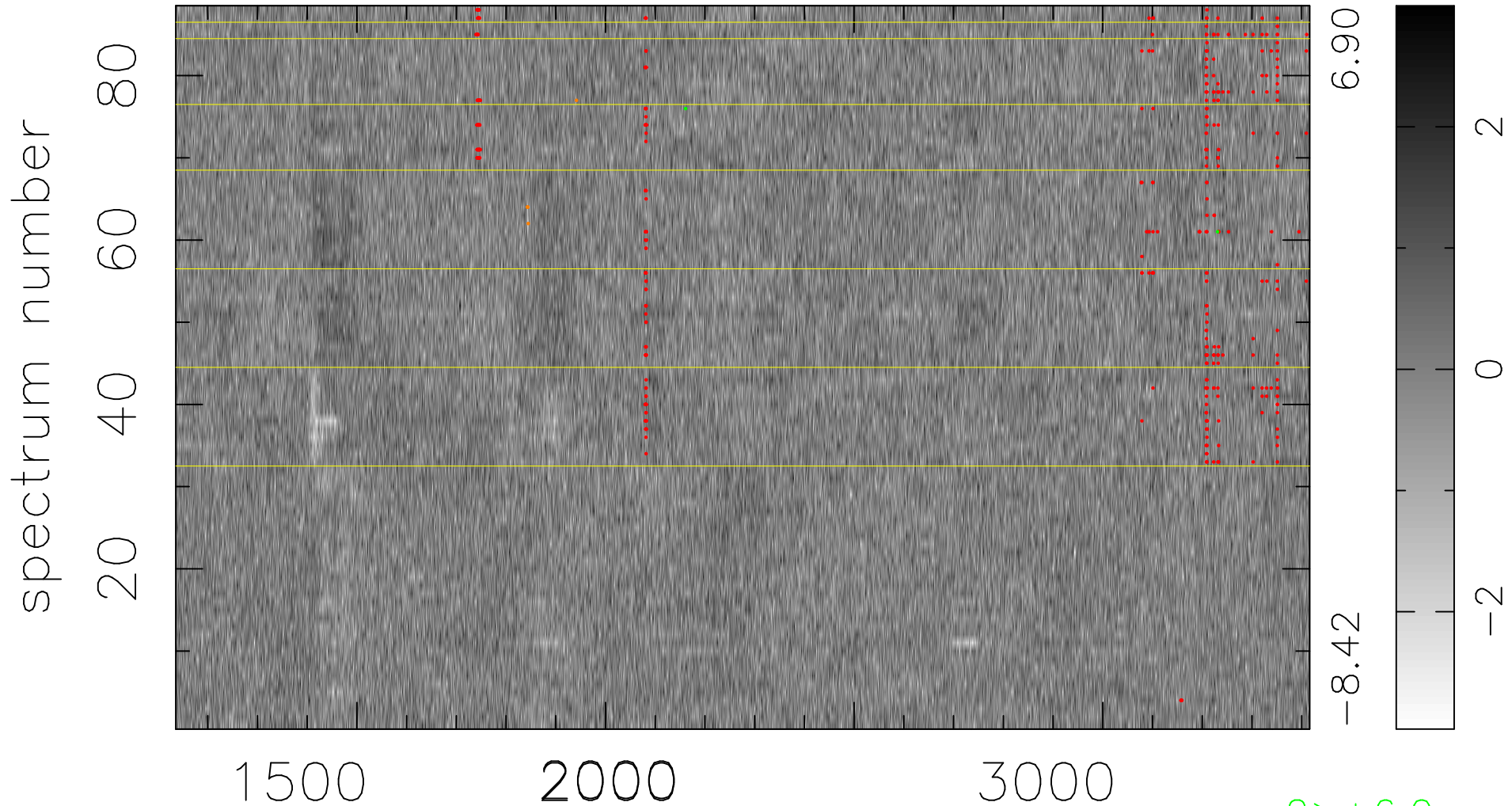


$$\chi(\lambda, t) = (\text{Data} - \text{Model AC}_5\text{F}) / \sigma \chi$$

$$\chi^2 / (401456 - 5117) = 0.941 \Rightarrow 1.007$$

4562x88



bad:402=0.10%

λ (Å) $z = 1.69327$

2 > +6.0 σ

5 < -6.0 σ