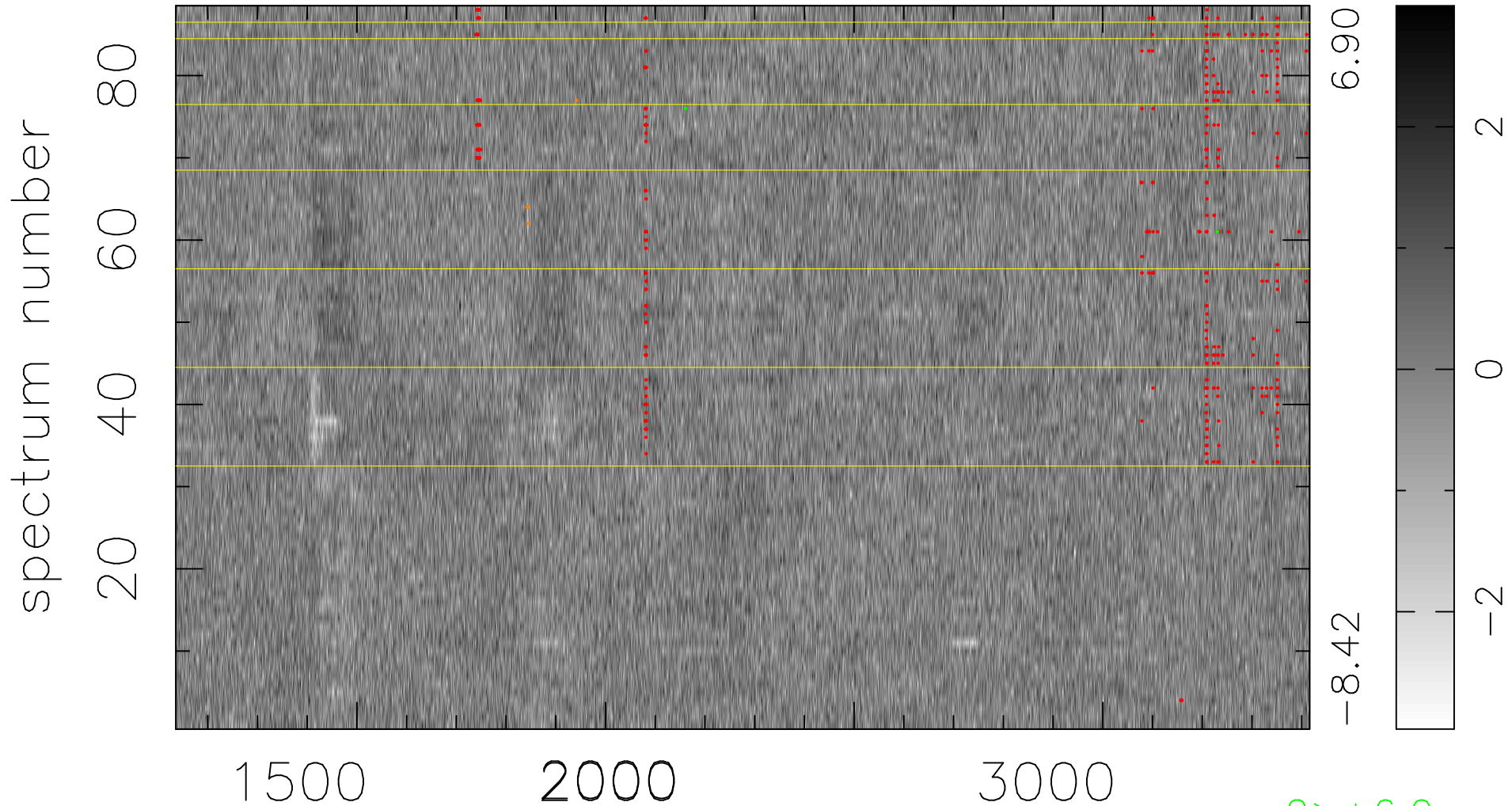


$$\chi(\lambda,t) = (\text{Data} - \text{Model } AC_5) / \sigma \chi$$

$$\chi^2 / (401456 - 5029) = 0.941 \Rightarrow 1.007$$

4562x88



bad:402=0.10%

λ (Å) $z = 1.69327$

2 > +6.0σ

5 < -6.0σ