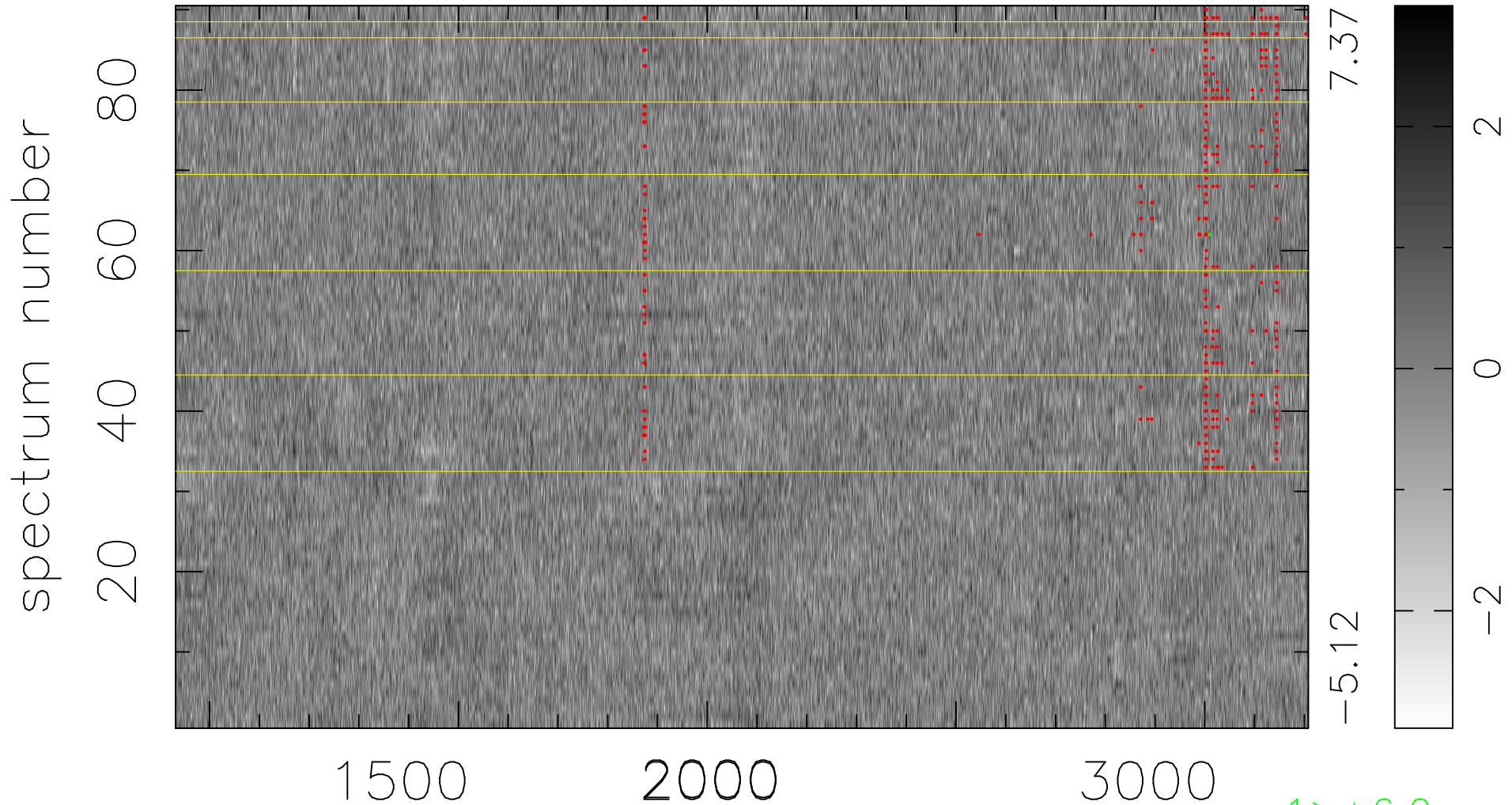


$$\chi(\lambda,t) = (\text{Data} - \text{Model AC}_5\text{F}) / \sigma \chi$$

$$\chi^2 / (409770 - 5237) = 0.910 \Rightarrow 1.007$$

4553x90



bad:396=0.097% λ (Å) $z = 1.96243$

1 > +6.0 σ