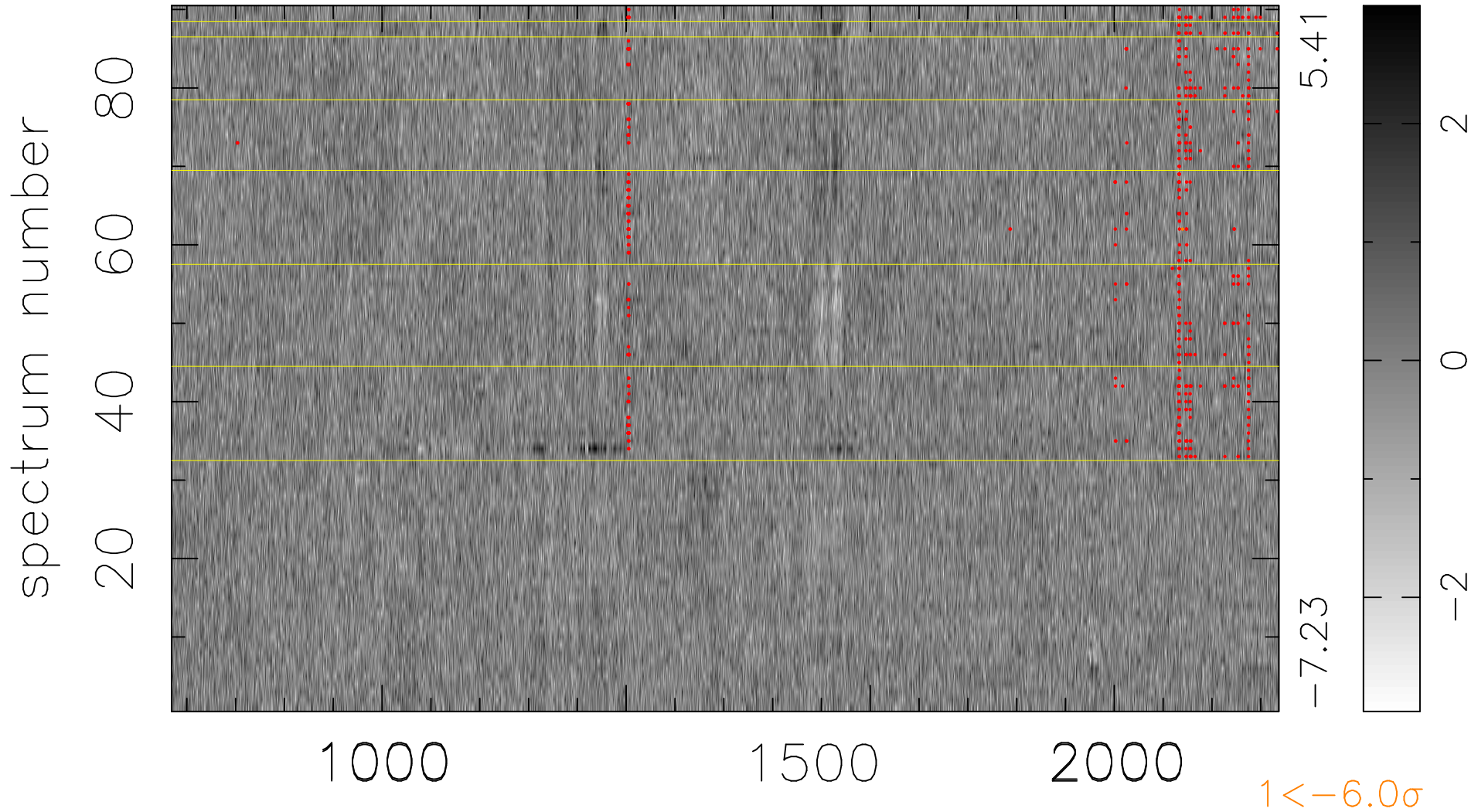


$$\chi(\lambda, t) = (\text{Data} - \text{Model } \text{AC}_5\text{B}_6\text{F}) / \sigma \chi$$

$$\chi^2 / (408330 - 5333) = 0.954 \Rightarrow 1.006$$

4537 × 90



bad:499=0.12% λ (Å) $z = 3.42086$