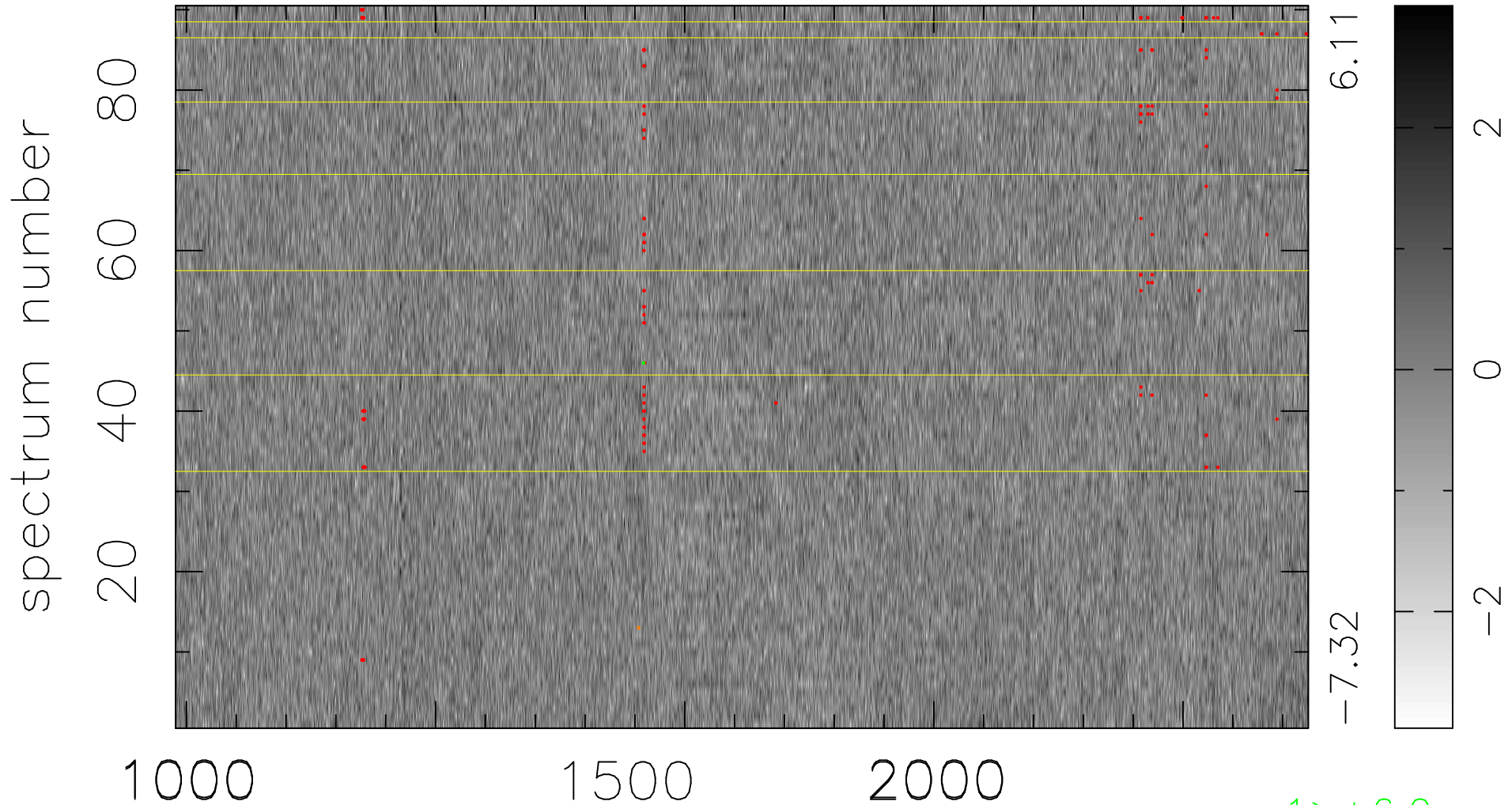


$$\chi(\lambda, t) = ( \text{Data} - \text{Model } \text{AC}_5\text{B}_7\text{F} ) / \sigma \chi$$

$$\chi^2 / (409230 - 5446) = 0.890 \Rightarrow 1.008$$

4547x90



bad:159=0.039%  $\lambda$  (Å)  $z = 2.65456$

1 > +6.0 $\sigma$

1 < -6.0 $\sigma$